








# Bwezela ya Msogoleli wa njuci

-  Zulu folktale
-  Wiehan de Jager
-  Sitwe Benson Mkandawire
-  4
-  Chichewa ny



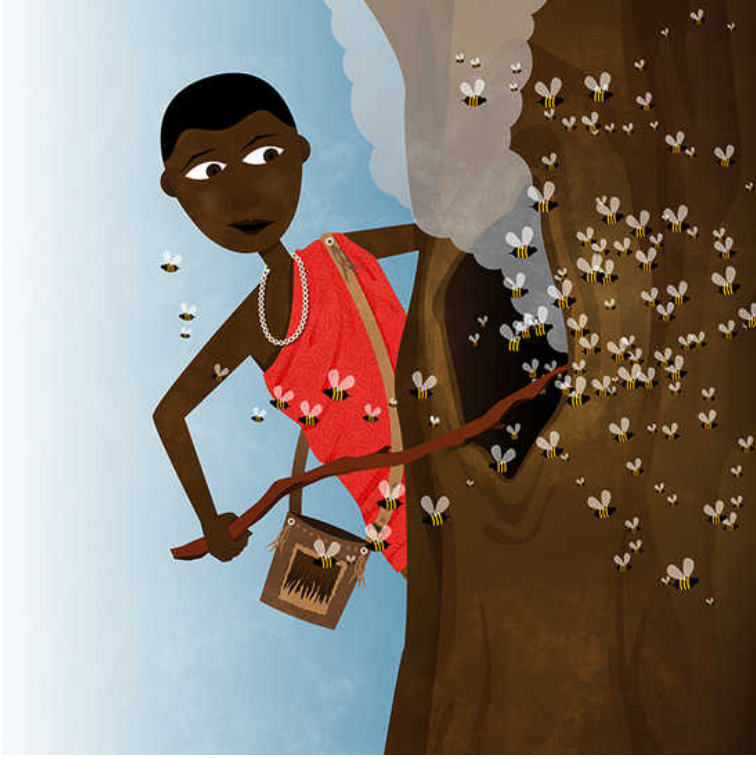
Iyi ndi nkhani ya Ngede, msogoleli wa njuci, ndi munyamata ozikonda ochedwa Gingile. Tsiku lina pamene Gingile anacokapo kukasaka nyama mthengo, anamva Ngede kuitana. Gingile anamva njala ya uci kwambiri. Anaimilira ndikumvetsetsa, kusakira mpaka anaona mbalame m'mwamba mwamtengo. "Chiti-chiti-chiti," mbalame inalira pamene inai kuluka ku kumtengo wina ndi winanso. "Chiti-chiti-chiti," mbalame inaitana, ndikuimilira kawirikawiri kuyembekezela kuti Agingile alikubwela.



Pakanapita phindi zokwanila 30, anafika pa m'tengo ukulu ochedwa mkuyu. Ngedede analumphalumphama mu m'tengo cimeneci kuuza Gingile kuti tafika. Gingile sanaone njuci pansipa pa mtengo koma anadalira Ngedede.



Gindile anaika pansi mkondo wake panyansi pa mtengo, anatenga nkhuni nakuyasha moto. Pamene moto unayaka bwino, anaika kamtengo katali pakati pamoto. Kamtengo kameneka kanali kuziwika pankhani yopanga chusi cambili pakupya. Anayamba kukwela cimtengo ndi kamtengo ka chusi pakamwa.



Posacedwa, anamva kulira kwa njuci. Zinali kulowa ndi kucoka m'mphako. Pamene Gingile anafika, anaika kamtengo kausi m'mphako. Njuci zinacoka mofulumira ndikukalipa. Zinathawa cifukwa sizinakonde usi ndiponso zikalibe kuyenda, zinamuluma Gingile.



Pamene njuci zinacoka, Gingile analowetsa dzanja lake mu m'mphako nakucosa uci umene unali ndi mafuta oyela. Anaika uci wake mukacola kamene ananyamula pephewa ndipo iye anayamba kuseluka m'mtengo.



Ngede anali kuyangana zonse zamene Gingile anali kucita. Anali kuyembeza kuti amusiyileko uci kuthokoza pomulangiza. Ngede anayesa kufedera pafupi kuti amuoneko. Gingile anafika pansu pa mtengo ndiponse ngede anaimilira pa mwala kuyembekezera kuti amupaseko.



Koma Gingile anazimya moto, ndi kunyamula mkondo wake nakuyenda kunyumba kosamukumbuka Ngede. Ngede anamuitana mokalipa, “VIC-torr! VIC-torrr!” Gingile anaimilira, anayangana ka mbalame ndi kuseka kwambiri. “Ufuna uci, ha mzanga? Ndasewenza ndi kulumiwa ndekha! Nicifukwa cani ufuna ndikupaseko uci wabwino tere?” Iye anayenda. Ngede anakalipa kwambiri! Anakalpa! Koma azabwezela tsiku limodzi.





Tsiku limodzi, Gingile anamveranso kuti Ngedede aitana. Anakumbukira uci wabwino uja ndiponso iye anakakonkhanso kanyoni. Pamene Gingile anakonkha kanyoni, kanamupeleka kumalupiri koipa. Pamene anafika kuja, Ngedede anaimilira kuti apumuleko mcimtengo ca minga. "Ahh," anaganiza Gingile. "Mphako ya njuci ifunika kupezeka umu mwamene m'mtengo". Anapanga moto mwamsanga nakuyamba kukwela nakamtengo ka cusi kukamwa. Ngedede anakhala cete ndi kutamba.



Gingile anakwela, nakuganiza kuti ncifukwa cani saona njuci kuimba monga mwanthawizonse. “Kapena mphako ya njuci ili mukati mwa mtengo,” anaziganizila. Anayendelako pamwamba. Koma mwakuti aone mphako, anaonana ndi nyalugwe! Nyalungwe anakalipa kwambiri posokoneza tulo kwake. Nyalugwe anacepesa maso ake ndikusegula kamwa kulangiza meno yakuthwa.



Pamene Nyalungwe anayesa kumuluma Gingile, anaseluka cimtengo mwamsanga. Mofulumira, anagwa kuipa kucoka m'mtengo nakuzicita kwendo. Anathamanga mwansanga kuyopa nyalungwe. Mwamwai, Nyalugwe anali natulo kwambiri ndiponso iye sanamupitikise. Ngede, musogoleli wa njuci anabwezera. Ndiponso Gingile anaphunzirilapo.



Ngati ana aGingile amvela nkhani ya Ngedede, amakapasa ulemu kanyoni. Akacosa uci, amasiyako uci wambiri kuti musogoleli wa njuci adye!



# Global Storybooks

[globalstorybooks.net](http://globalstorybooks.net)

## Bwezela ya Msogoleli wa njuci

 Zulu folktale

 Wiehan de Jager

 Sitwe Benson Mkandawire

