




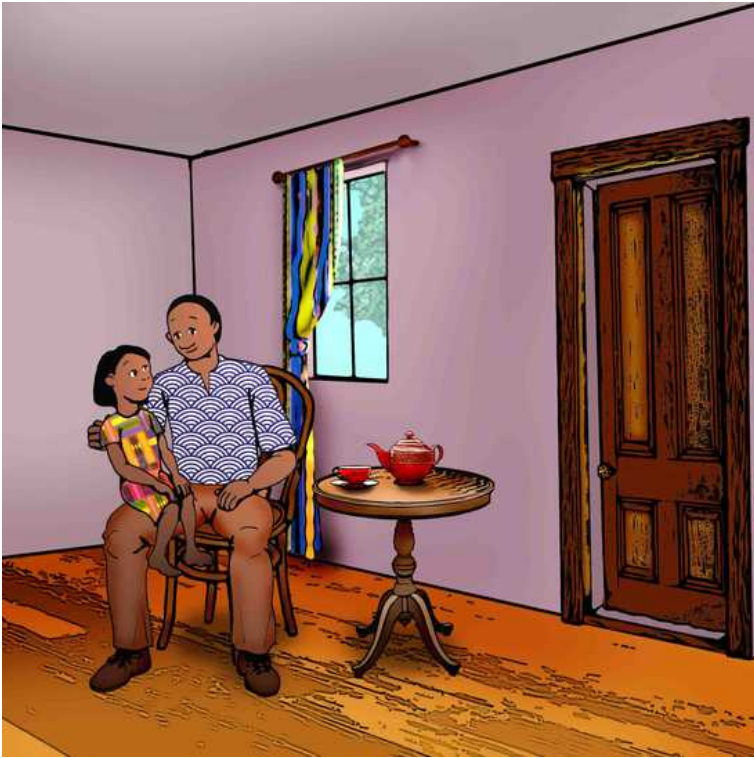




Simbegwire

-  Rukia Nantale
-  Benjamin Mitchley
-  Amos Mubunga Kambere
-  5
-  Olukonjo



Simbagwire mwabya nobulighe bunene, mama wiwe abiriholha. Thatha wa Simbagwire mwalengaho kutsibu erilembere mwali wiwe. Neryo bolhobolho mubatsuka eritsangatsanga isihali mama wa Simbagwire. Obulingyakyakya bakikalha nerihanulha okwa ebikendikoleka ekiro ekyo. Obul'igholhogholho bakahuka akalyo haima, neryo iberya esya bakuli haima. Thatha wa Simbagwire inyawathikya okw'amasomo aw'eka.



Kiro kighuma thatha wa Simbagwire mwasa omwigholhogholho kutsibu. “Ulihayi mwana waghe” mwabirikira. Simbagwire mwasa akathibitha eyiri thatha wiwe. Neryo mwimana akalhangira thatha wiwe akasa inyanahambire okuboko kwomumbesa. “Nyanzire wusangasangane n’omumbesa wembaghane, mwana waghe. Ono ni Anita”, mwabugha inyanemuseka.



“Kuthi Simbagwire, thatha waghu abirimbwira mwatsi munene okwiwe”, Anita akaramukya. Aliryo mwatha seka kandi mwathimya nebyalha biwe. Thatha wa Simbagwire abya n’etseme nene. Mwakania okwabosi basathu erikalha haima. nobuyingo bwabo kubukendiwana. “Mwana waghe, ngawithe erilengekania indi ukendirigha Anita eribya mama waghu”, mwabugha athya.



Obuyingo bwa Simbagwire mubwahinduka. Mwathasyathunga endambi yerikalha na thatha wiwe omwangyaky. Anita mwatsuka erimuha emibiri minene eyerikolha neryo mwathasya thunga obuthuku bwerisomera eka omwigholho. Banabiriwunza erirya neryo inyayiwusa omwangyango. Amalighe iwe eriyaghunzira womw'akabbulangiti mama wiwe amusighira. Thatha wa Simbagwire mwathalangira mwali wiwe kwathakyiri nebitsange.



Emyisi mike yabirilhaba, thatha wa Simbagwire mwabwirabo athi akendibulhaho habwa kathuku kake. “Ngendighenda habw’omubiri waghe”, nyinasi mukendiwathikania. Obusu bwa Simbagwire neryo mubwakina, aliryo thatha wiwe mwathalhangira. Anita mwathabugha kindu. Nayo mwathanza nahake.



Ebindu byamasighalha bikakalira Simbagwire. Amethendiwunza emibiri yiwe, kutse amayibughanganisya, Anita inyaka muhumba. Nokondambi eyerirya omuhuka ono inyakalya ebyalya ebyosi erisakirya Simbagwire otutahangukirya. Obuligholhogholho, Simbagwire inyakayithwalha omwa kakyingo kiwe neribumbathira akabbulangiti kamama wiwe amusighire okwa kikuba.



Kiro kighuma, omwangyaka, Simbagwire mwatselewa erilwa omwa kakingo kiwe. “Iwe musika mughara” Anita akaturuma. Akapura Simbagwire yomwakakingo kiwe. Akabbulangiti akabuya mukahathira omwamusumali, neryo kamatamuka mwabipindi bibiri.



Simbagwire mwahithana kutsibu. Neryo amathwamo erithibitha erilhwa omwa muyi. Amaboha othubbulangiti twiwe, amaboha netwalya, neryo amaghenda. Mwakwama olhuyira olhwa thatha wiwe alhabamo ekiro aghenda.



Obuthuku bwabere bukira, neryo amasamba omwa muthi hakuhi nolhusi, neryo amakolha engyingo yiwe omwamuthi. Abere akayawotsera, amimba olhwimbo: “Maama, maama, maama, muwanzigha. Muwanzigha kandi wamaani subulha. Thatha syakyinyanzire. Mama, ghukendisyasubulha kiro kyahi? Wabirinzigha.”



Omwangyaka ekindi kiro, Simbagwire mwimba olhwimbo lhwawe kandi. Abaghole babere bakasa erisoya ebisomeko byabo, mubowa olhwimbo lhw'obulighe lhukalhwa omwa muthi. Mubalengekania ambu obundi nirihunga likaghendesaya emithi, neryo mubathatsomana. Aliryo omughuma okwabaghole mwahulikirira olhwimbo lhwandeke.



Omughole ono mwasamalira omwa muthi. Abere alhangira omwana wobukali, n'otubbulangiti ithunemukangabasania, mwalira emisoni, neryo abirikira, Simbagwire, omwana wa mughalha wethu! Abaghole abandi mubaleka erioya ebisomeko byabo neryo bamawathikya Simbagwire erikyima omwamuthi. Neryo songali wiwe amabumbathira akambesa, nerikahumulikania.



Songali wa Simbagwire mwamuthwalha ewiwe eka. Amahereya Simbagwire yebyalya ebihuhire, nerimuhira omwa kitanda haima nakabbulangiti kamama wiwe. Ekiro ekyo, Simbagwire mwalira akayabotsera. Aliryo yabya misoni yerihumulikania. Mwaminya athi songali wiwe akendimulembere ndeke.



Thatha wa Simbagwire abere asubulha, mwasangana ekisenge kya mwali wiwe ikine buyira. “Anita, yabereki eno” amabulya nomuthima wobulighe. Omughole amathulhawo ati Simbagwire athibithire. “Munanza indi ambire mwe kitsumbi, mbwino munamukalhako kutsibu”. Thatha wa Simbagwire mwalw’eka neryo amaghenda omwanzira eyikaghenda elhusi. Neryo amaghenda ewa mwaliwabu akayalebya nganabwene Simbagwire.



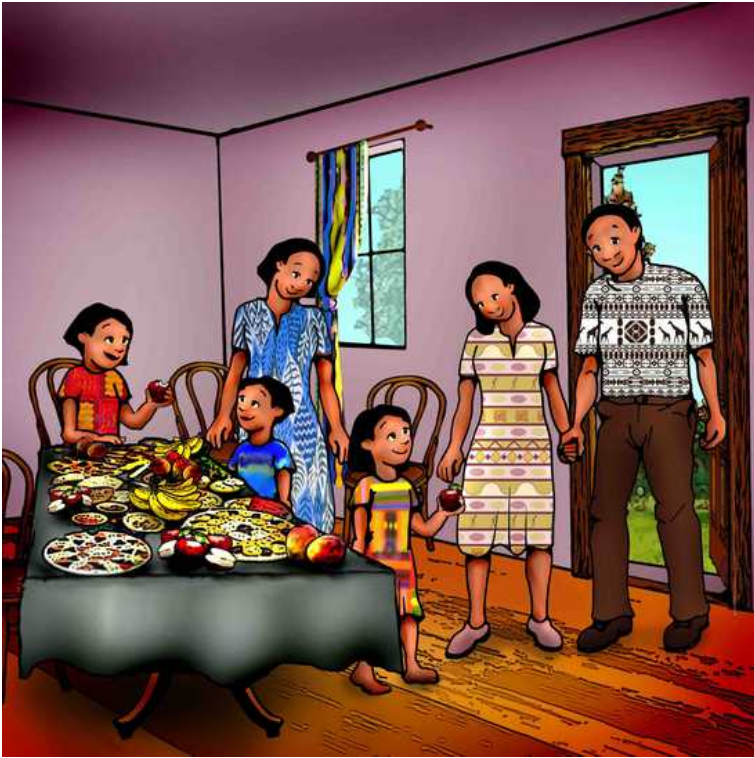
Simbagwire abya inyanimusatha namwaliwabu, akalhangira thatha wiwe omwa lhuyira. Mwasagha ati mbwino akendimutsumanga, neryo amathibitha omwanyumba eriyabisama. Aliryo thatha wiwe mwaghenda eyali, neryo abugha ati, "Simbagwire wabirisunga omubuthi omubuya.

Oyukakuyithegherera, kandi nerikwanza.

Wamanyiha kwesisoni, kandi nga kwanzire. Neryo bamathwamo bathi Simbagwire akwame kwerikalha na songali wiwe.



Thatha wiwe inyakasamulebaya bulikiro. Neryo mwalindwa inyamasa na Anita. Anita amamuha ebyalha ati Simbagwire, unganyire mwana, munakusoberya, “wanganaleka inathasyakulembere?” Simbagwire mwasamalira obusu bwathatha wiwe, neryo amaseghere embere amahira amaboko wiwe iribumbatirwa na Anita.




Esabiti eyasubukako, Anita mwathumira Simbagwire, mwaliwabu haima na songali wiwe, eryasa eka ewiwe erisalya ekihulho. Anita mwahuka ebyalya Simbagwire eby'anzire kutsibu. Mubalya bamoghutha ndeke. Abana bamayasatha neryo nabakulhu bamaghenda omwa muliira. Simbagwire mwatsanga kutsibu kandi amayira amani. Neryo amatwamo ati omwabiwo bithebyahali akendisyasubulha inyayikalha na thatha wiwe haima na mamulere wiwe.




Global Storybooks

globalstorybooks.net

Simbegwire

 Rukia Nantale

 Benjamin Mitchley

 Amos Mubunga Kambere

