








# Simbegwiere

-  Rukia Nantale
-  Benjamin Mitchley
-  Georgette McGlashen
-  5
-  Patwa



Wen Simbegwiere mada did ded, shi did sad-sad. Simbegwiere faada did du im bes fi tek kier a im daata. Likl bai likl, dem lorn fi fiil api agen, wid out Simbegwiere mada. Evri maanin dem siddong an taak bout di die infronta dem. Evri iivlin dem mek dina tugada. Afta dem wash di pliet dem, Simbegwiere faada elp ar wid ar uomwok.



Wan die Simbegwiere faada kom uom lieta dan yuuzhal. "We yu de mi pikni?" im kaal. Simbegwiere ron go to ar faada. Shi stap wan plies wen shi si se ar faada did a uol aan pan wahn uman an. "Mi waahn yu fi miit sumadi speshal, mi pikni. Dis a Aniita," im se a smail.



“Eluo Simbegwiere, yu faada tel mi uol iip bout yu,”  
Aniita se. Bot shi neva smail ar tek di pikni an.  
Simbegwiere faada did api an fiil gud bout we apm.  
Im did a taak bout di chrii a dem a liv tugeda, an ou  
gud dem laif wuda bi. “Mi pikni, mi uop yu wi tek  
Aniita fi yu mada,” im se.



Simbegwiere laif chienj. Shi neva av no muor taim fi siddong wid ar faada inna di maanin dem. Aniiita did gi ar so moch ous wok fi du dat shi did tuu taiyad fi du ar skuul wok inna di iivlin. Shi go schriet a ar bed afta dina. Ar ongl komfat a did di priti-priti blangkit we ar mada did gi ar. Simbegwiere faada neva siim fi nuotis se im daata did sad.



Afta a kopl monts, Simbegwiere faada did tel dem se im wuda gaan we fram uom fi a wail. "Mi jab mek mi afi chravl," im se. "Bot mi nuo se yu wi luk afta unu wananeda." Simbegwiere fies did jrap, bot ar faada neva nuotis. Aniita neva se notn. Shi neva api naida.



Tingz get wors fi Simbegwiere. Ef shi neva don ar ous wok, ar shi komplien, Aniita lik ar. An wen a dina taim, di uman nyam muos a di fuud, an lef likl bit fi Simbegwiere. Evri nait Simbegwiere baal til shi jrap asliip, a og op ar mada blangkit.



Wan maanin, Simbegwiere did wiek op liet. “Yu liezi gyal pikni!” Aniita baal out. Shi jrag Simbegwiere aaf a di bed. Di speshal blangkit kech pan wahn niel, an tier inna tuu.





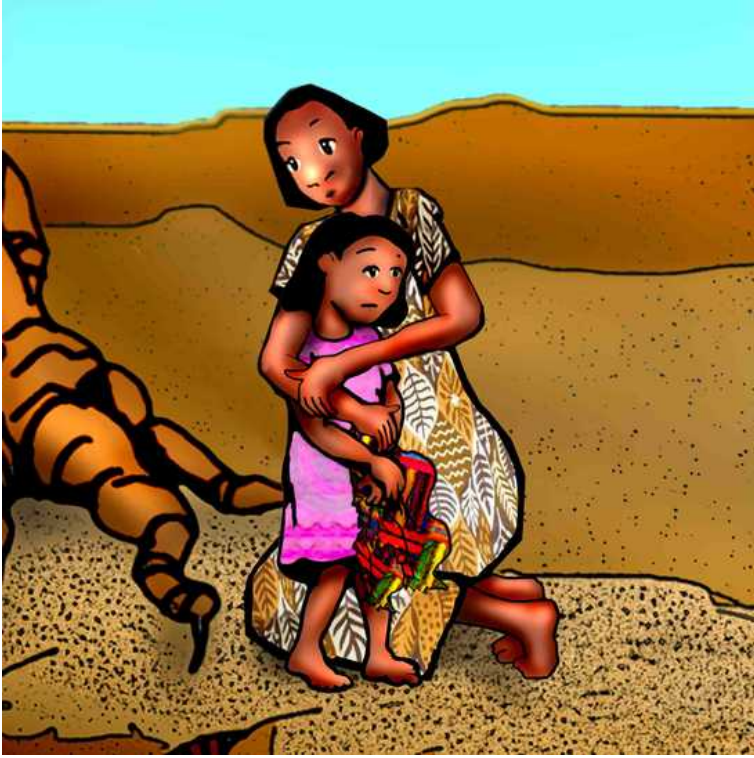
Simbegwiere did wel opset. Shi mek op ar main fi ron we fram uom. Shi did tek di piisiz dem fram ar mada blangkit, pak op som fuud, an lef di ous. Shi tek di ruod we ar faada di tek.



Wen iivlin kom, shi klaim go op inna wahn taal chrii nier wahn riva an mek a bed fi arself inna di lim dem. Az shi a jrap asliip, si did a sing: "Maama, maama, maama yu lef mi. Yu lef mi an neva kom bak. Papa no lov mi no muor. Mama, wen yu ago kom bak? Yu lef me."



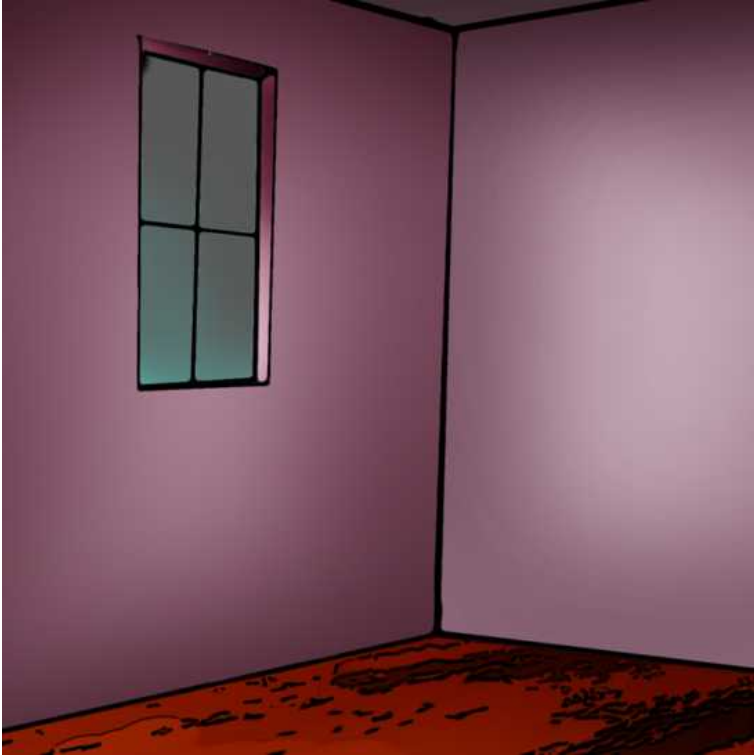
Di neks maanin Simbegwiere did a sing di sang agen. Wen di uman dem did kom wash dem kluoz dem a di riva, dem did ier di sad sang a kom fram di taal chrii. Dem did tingk se a did onngl di briiz a bluo di liif dem, an did gwaan du dem wok. Bot wan a dem lisn gud-gud tu di sang.



Di uman did luk op inna di chrii. Wen shi si di gyal pikni an di piisiz a di priti-priti blangkit, shi baal, "Simbegwiere, mi breda pikni!" Di ada uman dem stap wash an elp Simbegwiere fi klaim dong outta di chrii. Ar anti og op di likl gyal pikni an chrai fi komfat ar.



Simbegwiere anti tek di pikni go a fi ar yaad. Shi did gi Simbegwiere waam fuud, an put ar fi sliip inna wan bed wid ar mada blangkit. Da nait de, Simbegwiere baal az shi a jrap asliip. Bot a did yai-waata kaaz shi fiil riliif. Shi nuo se dat ar anti wud a luk afta ar.



Wen Simbegwiere faada kom bak uom, im fain ar ruum emti. "A wa apm, Aniita?" im se wid a evi aat. Di uman tel im se Simbegwiere did ron we. "Mi did waahn ar fi rispek me," shi se. "Bot miebi mi did tuu schrik pan ar." Simbegwiere faada lef di ous an go inna di direkshan a di riva. Im kantinyuu go schriet a im sista vilij fi fain out ef shi did si Simbegwiere.



Simbegwiere did a ramp wid ar kozn dem wen shi did si ar faada fram wie out. Shi did fried im mait a beks, so shi ron go inna di ous fi aid. Bot ar faada go tu ar se, "Simbegwiere, yu fain di porfek mada fi yusef. Wan uu lov yu an andastan yu. Mi proud a yu an mi lov yu." Dem agrii se Simbegwiere wud a stie wid ar anti fi az lang az shi waahn.



Ar faada go luk fi ar evridie. Ivenshali, im did kom wid Aniita. Shi uol aan pan Simbegwiere an, “Mi sari-sari likl wan, mi did rang,” shi baal se. “Yu wi mek mi chrai agen?” Simbegwiere luk pan ar faada an im fies did luk kansorn. Den shi tek taim waak tuwaadz Aniita an og ar op.





Di neks wiik, Aniita aks Simbegwiere an ar kozn dem an anti, fi kom a di yaad fi it fuud. Wat a fiis! Aniita mek aal a Simbegwiere fievarit fuud dem, an evribadi nyam so til dem beli ful. Den di pikni dem ramp miinwail di big piipl dem did a taak. Simbegwiere did fiil api an brier. Shi mek op ar main se suuhn-suuhn, shi wuda go bak uom fi liv wid ar faada an ar stepmada.



# Global Storybooks

[globalstorybooks.net](http://globalstorybooks.net)

## Simbegwiere



Rukia Nantale



Benjamin Mitchley



Georgette McGlashen

