




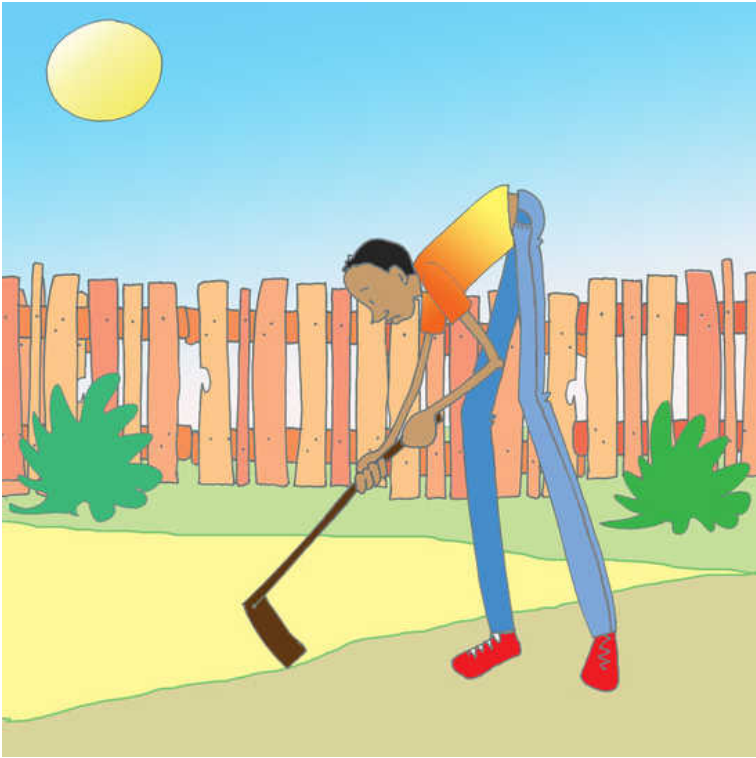




# Wahn taal-taal man

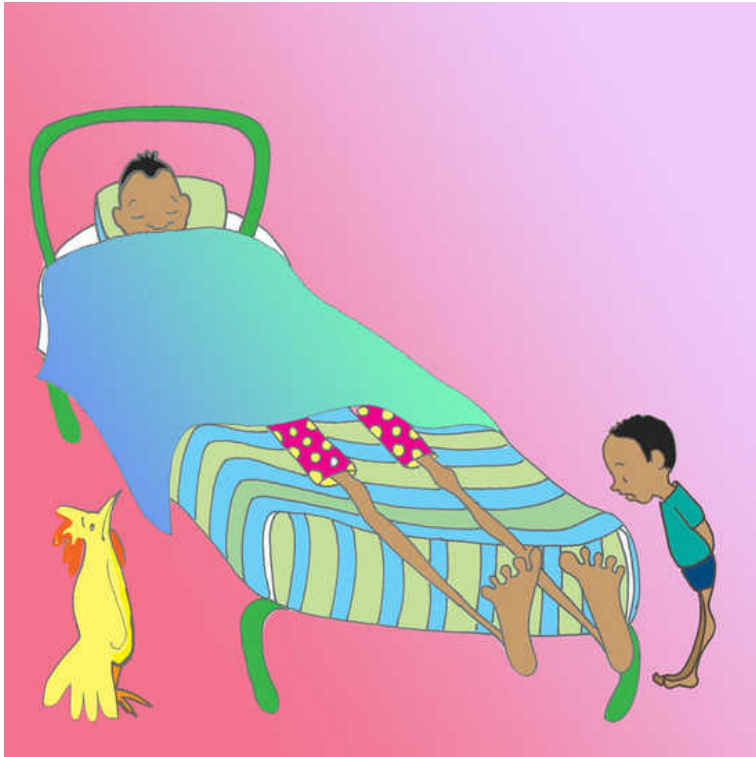
-  Cornelius Gulere
-  Catherine Groenewald
-  Georgette McGlashen
-  2
-  Patwa



Im uo did tuu shaat.



Im duowie did tuu luo.



Im bed did tuu likl.



Im baisikl did tuu likl.

Da man ya did tuu taal!



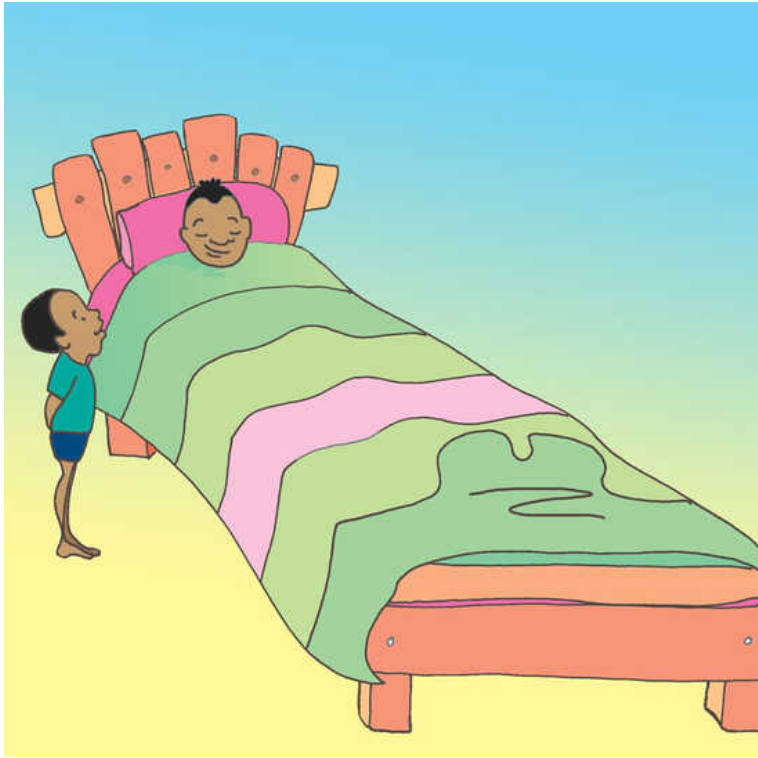


Im mek wahn lang-lang stik fi di uo.



Im mek wahn ai-ai duowie.

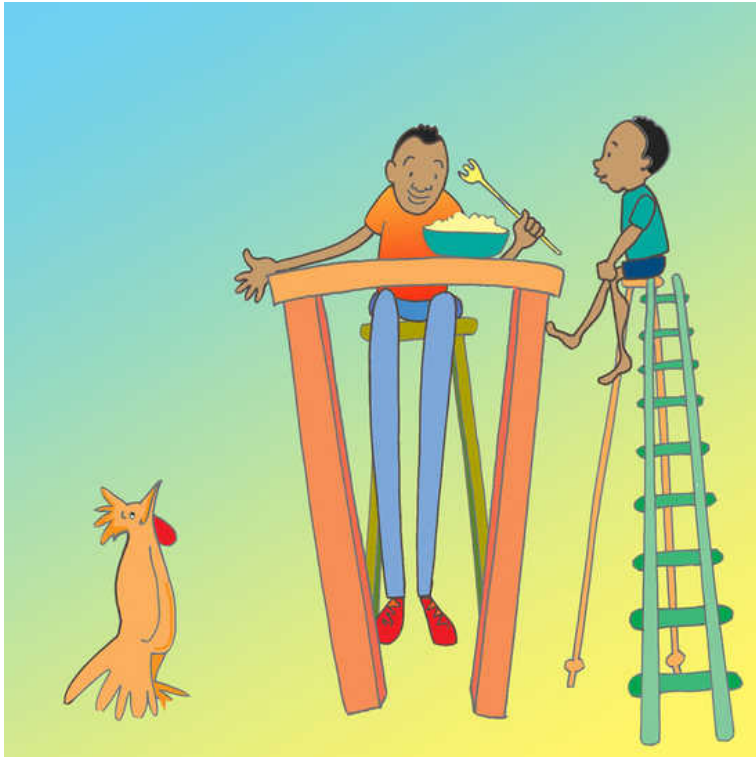




Im mek wahn lang-lang bed.



Im bai wahn big-big baisikl.



Im sidong pan wahn ai-ai chier. Im nyam wid wahn lang-lang faak.



Im did go we lef im ous an did go liv ina wahn  
big faris. Im liv de fi nof-nof ierz.




# Global Storybooks

[globalstorybooks.net](http://globalstorybooks.net)

## Wahn taal-taal man

 Cornelius Gulere

 Catherine Groenewald

 Georgette McGlashen

