








Simbegwire

-  Rukia Nantale
-  Benjamin Mitchley
-  Stephen Zulu
-  5
-  IciBemba



Lintu baanina Simbegwire baafwile, ali uwasakamana sana. Bawishi baaliesha namaka ukumona ukuti Simbegwire ali umutende. Panono panono, baasambilile ukuba abatemwa nakabili, ukwabula baanina Simbegwire. Cila lucelo baaleikala na ukulanda pa bushiku bwakuntanshi. Cila cungulo baalepekanya icakulya ca cungulo capamo. Panuma ya kusuka ifya kuulilapo, bawishi Simbegwire baaleafwa umwana imilimo ya kusukulu.



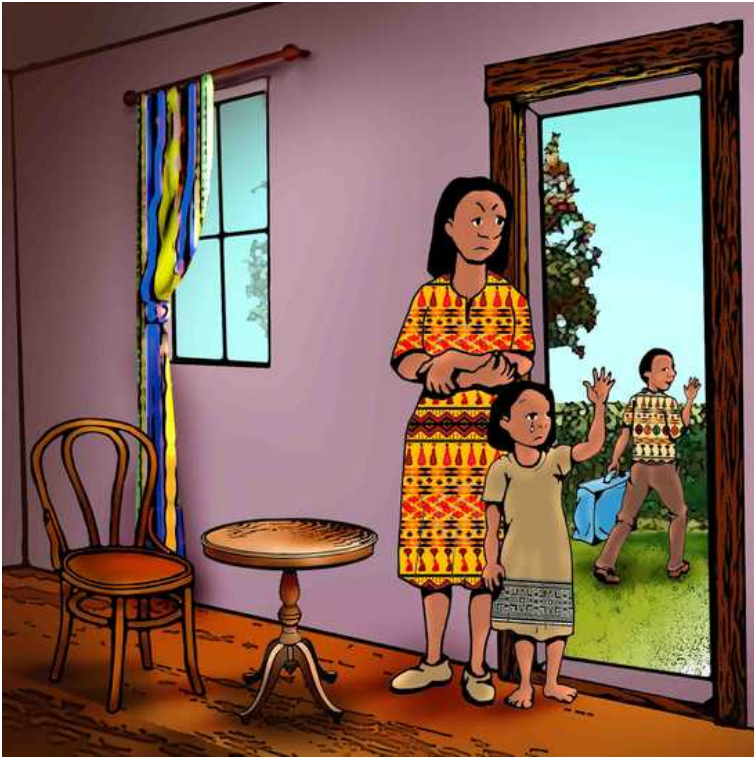
Ubushiku bumo, bawishi Simbegwire baaishile pa n'ganda munshita yabushiku ukucila inshiku sha kunuma. Baalitile abati, "ulikwisa we mwana wandi"? . Simbegwire abutukile kuli bawishi. Aliminine lintu amwene ukuti baawishi bekatilile umwanakashi pakuboko. "ndefwaya iwe wishibane no muntu umo umusuma, we mwana wandi. Uyu ni Anita," baalandile mu kumwentula.



Anita aalandile ati, “shani Simbegwire, bawiso baanjebele ifingi pali iwe,”. Koma Simbegwire taamwentwile nangu ukuposha uyu mwanakashi mu minwe. Bawishi Simbegwire baali abatemwa na insansa. Baalandile efyo bonse batatu bangekala pamo, na efyo imikalile yabo i ngaba iisuma. Baalandile “we mwana wandi, ndesubila walasumina Anita ukuba nga banoko,”.



Ubwikashi bwa kwa Simbegwire bwacinjishe. Taakwete inshita yakuba nabawishi mu lucelo. Anita aalemupela incito sha pa n'ganda ishingiri icalengele ukuti adefilwa uku kwata inshita ne milimo ya kusukulu mu cungulo neco aleenaka sana. Aile mukusendama panuma ya cakulya ca mu cungulo. Ubusumino bwakwe, bwali li langishi lya bulangeti bamupele banyina. Bawishi Simegwire calemoneka kwati tabaishibe kuti umwana wabo taali uwansansa.



Panuma fye ya myeshi inono, bawishi Simbegwire balaile pa n'ganda ukuti balefumapo panshita inono."mfwile ukuya kuncito,"baatile. Koma ninjishiba ukuti mwakulaikala fye bwino. Simbegwire aponya necinso panshi, nomba bawishi taabaishibe. Anita talandile nelyo cimo. Naena taatemenwe iyo.



Ifintu kuli Simbegwire fyacilamo. Nga tapwishishe incito isha mu n'ganda, nangu ngailishanya, Anita aleemubola. Nga nipa cakulya ca cungulo, Anita aleelya ukucila ukushila Simbegwire utwakulya utunono. Cila bushiku nga bwaila, aleelila uku ninshi nafukatila no bulangeti bwa baanina.



Ubushiku bumo ulucelo, Simbegwire alicelwa ukubuuka. “we mwanakashi wabunan’gani iwe!” Anita apaatile. Asuunkile Simbegwire ukumufunya pa busanshi. Ubulangeti bwaiketwe no musomali no ku bulepula mu bili.



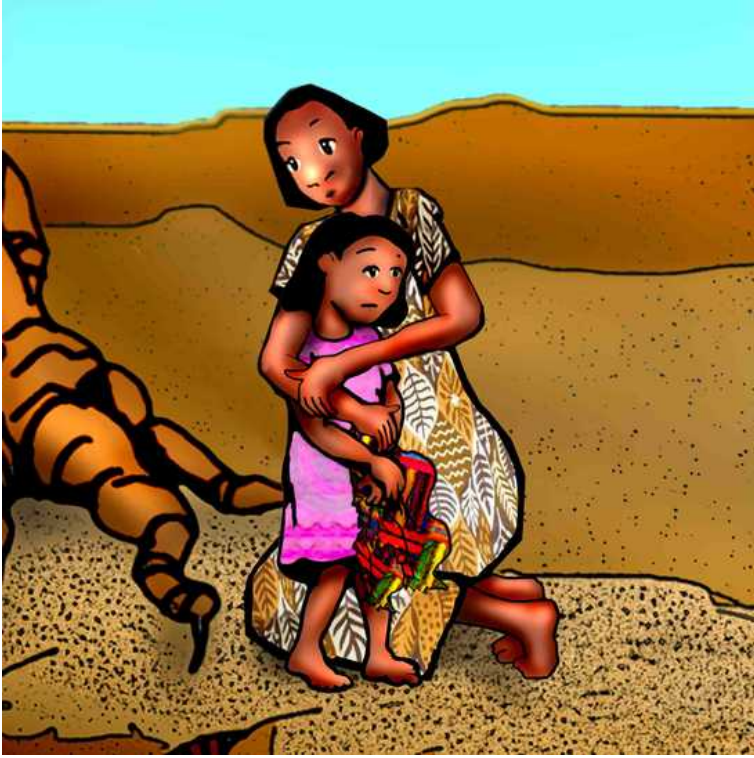
Simbegwire alifulwa sana. Atontonkenye ukubutuka ukufuma pa n'ganda. Aseendele utupimfya twa bulangeti bwa baanyina, ifyakulya afuma na pa n'ganda. Akoonkele umusebo kwaile bawishi.



Lintu caishilefika icungulo, aniinine kucimuti icitali mupepi nakamana apanga no busanshi mu mabula. Cilya talapona mu tulo, aimbile: maama, maama, maama, mwalinsha ine. Mwalinsha ukwabula ukubwela. Taata tantemwa nakalya. Mayo nilisa muleisa? Mwalinsha ine.



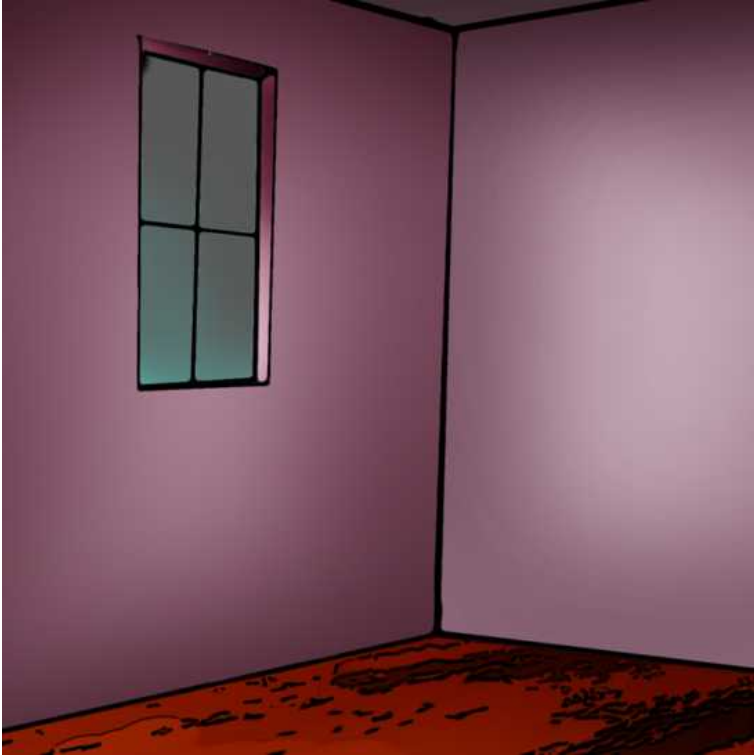
Ubushiku bwa konkelepo ulucelo, Simbegwire aimbile ulwimbo nakabili. Lintu banamayo baaishile mu kucapa ifya ku fwala pa mumana, baumfwile ulwimbo lulefumina ku cimuti icitali mumano ukuti cali cipuupu caaletensha amabula, awe bakonkenyepo ne milimo yabo. Koma umo pali bena aumfwile ku lwimbo no bupilibulo.



Uyu umwanakashi alooleshe kumulu wa cimuti. Lintu amwene cikashana na utupimfya twa bulangeti, aliila, "Simbegwire, umwana wa ndume yandi!" Banamayo bambi baalekele ukucapa na ukwafwa Simbegwire ukwikila panshi ukufuma ku cimuti. Baanina senge baafukatile umwipwa no kwesha uku mutalalika.



Baanyina senge Simbegwire baasendele Simbegwire ku n'ganda kumyabo. Baapele Simbegwire icakulya icakaba panuma, no ku mufimbilikisha pa busanshi no bulangeti bwa baanina. Bulya bushiku, Simbegwire aliilile lintu talalaala. Koma fyali filamba fya nsansa. Alishibe ukuti baanina senge balamusunga bwino.



Lintu bawishi Simbegwire baabwelele ku n'ganda, baasangile ku muputule wakwa Simbegwire takuli nangu kamo. "ninshi yacitike, Anita?" baipwishe no mutima uwafina. Anita ekulondola ukuti Simbegwire alibutuka. Anita epakulanda ati "naalefwaya alempela umucinshi". Nomba limbi caali cilamo." Bawishi Simbegwire baafumine pa n'ganda no kulola ku mumana. Baapitile mpaka ku mushi waba nkashi yabo ukuya mu kwipusha nga cakuti baali mumonako Simbegwire.



Simbegwire aleeangala na bafyala bakwe lintu amwene bawishi pakatalamukila. Aaletina pali limbi nabakalipa, ici calengele ukuti abutukile mu n'ganda mukubelama. Nomba bawishi baile kuli ena na ukulanda ati "Simbegwire, walisanga banoko abapwililika. Banoko abakutemwa kabili abakwishiba eflyo waba. Nga pali ici, ine ndi ngo watemwa kabili nalikutemwa. Baalisuminishanya ukuti Simbegwire akekala nabaanyina senge panshita akafwailapo umwine.



Bawishi bale mutandalila cila bushiku. Mpaka pakulekelesha, baishile na Anita. Aikete Simbegwire pakuboko. “unjeleleko we mwana, nali luufyanya,” aliilile. Kuti wansuminisha ukuti njesheko nakabili?” Simbegwire aloleshe bawishi abali ne cinso ca bulanda. Simbegwire aatampwile panono panono ukulola kuli Anita na ukubika amaboko yakwe ukushunguluka Anita.




Umulungu wakonkelepo, Anita aitile Simbegwire muku mutandalila pamo naba fyala bakwe ukubikapo fye na baanyina senge wakwe. Cakulya ninishi ici! Anita apekenye fye ifya kukulya fya temwa Simbegwire na bonse baipakishe mpaka baikuta. Abaice balyangele elyo abakalamba balyashike. Simbegwire aumfwile insansa ne cilumba. Atontonkenye ukuti nombaline, nombaline sana, akabwelela ku n'ganda mu kwikala nabawishi na baanina bakusangamo.



Global Storybooks

globalstorybooks.net

Simbegwire

 Rukia Nantale

 Benjamin Mitchley

 Stephen Zulu

