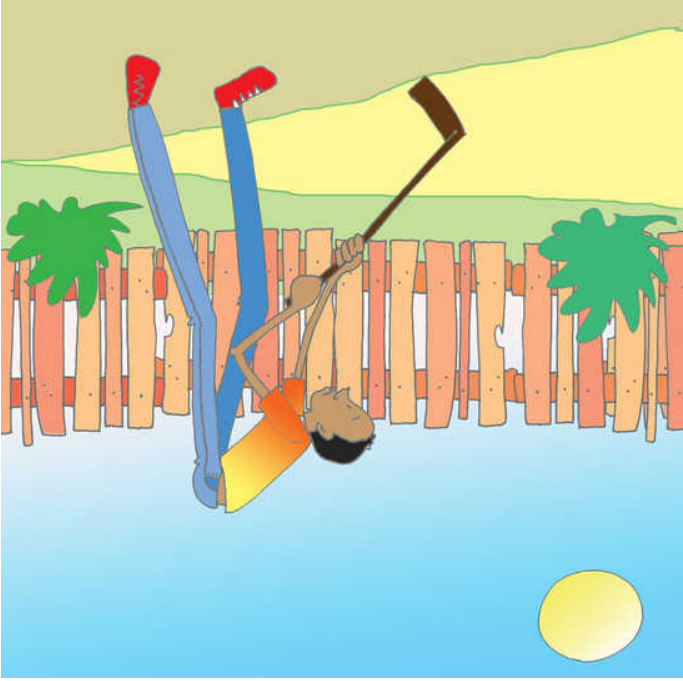


Mwanamme mrefu



✎ Cornelius Gulere

🔗 Catherine Groenewald

📁 Ursula Nafula

|| 2

🗨️ Kiswa!!!

MS



Global Storybooks

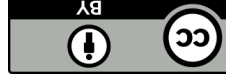
globalstorybooks.net

Mwanamme mrefu

✎ Cornelius Gulere

🔗 Catherine Groenewald

📁 Ursula Nafula

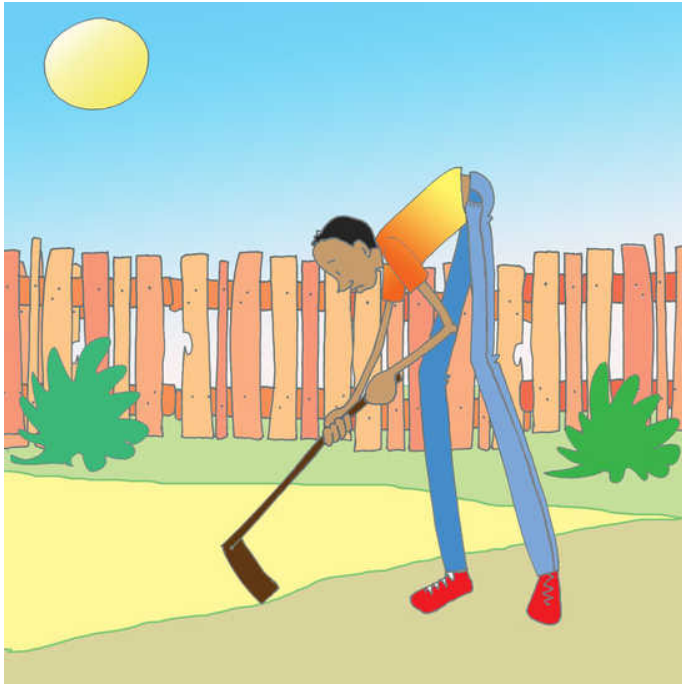


This work is licensed under a Creative Commons

[Attribution 3.0 International License.](https://creativecommons.org/licenses/by/3.0)

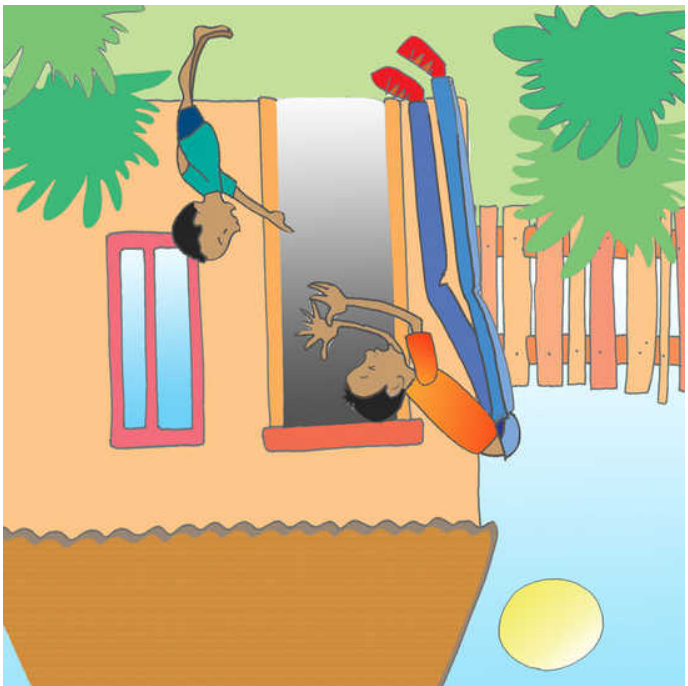
<https://creativecommons.org/licenses/by/3.0>

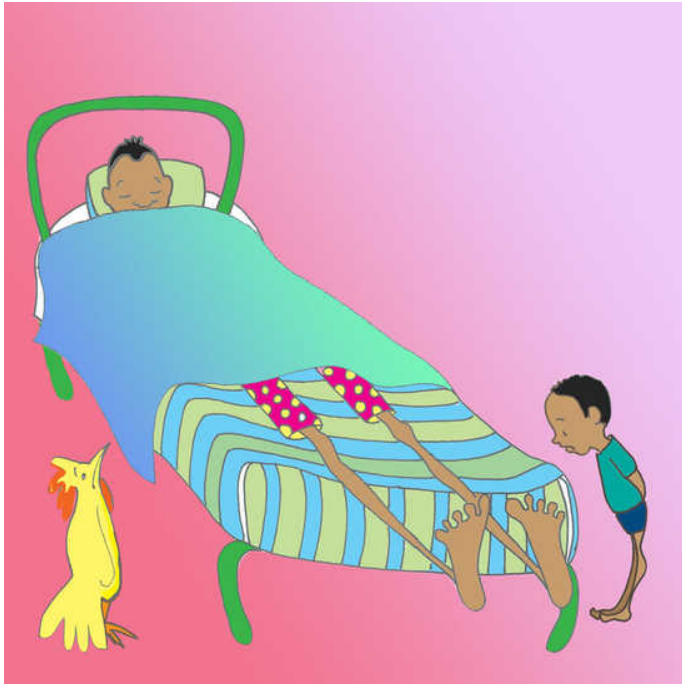




Jembe lake lilikuwa fupi mno.

Mlango wake ulikuwa chini
mo.





Kitanda chake kilikuwa kifupi mno.



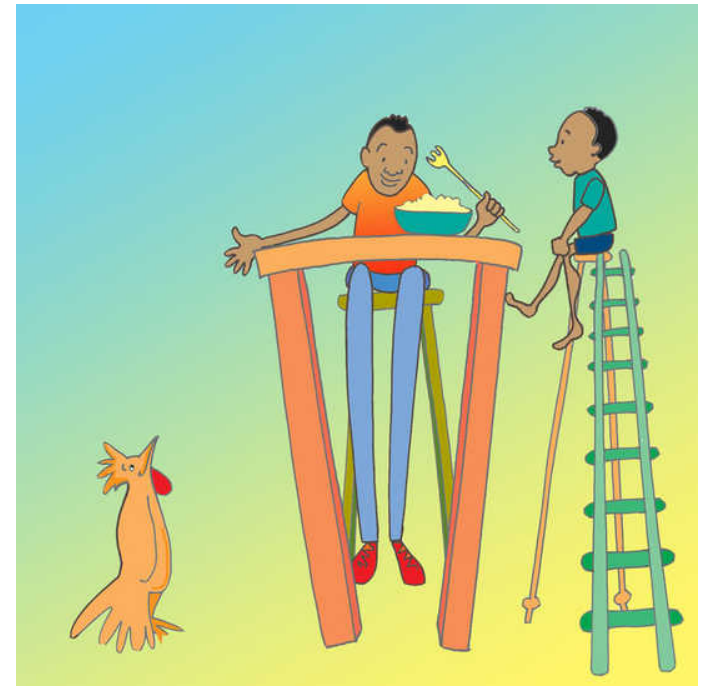
Baisikeli yake ilikuwa fupi sana.



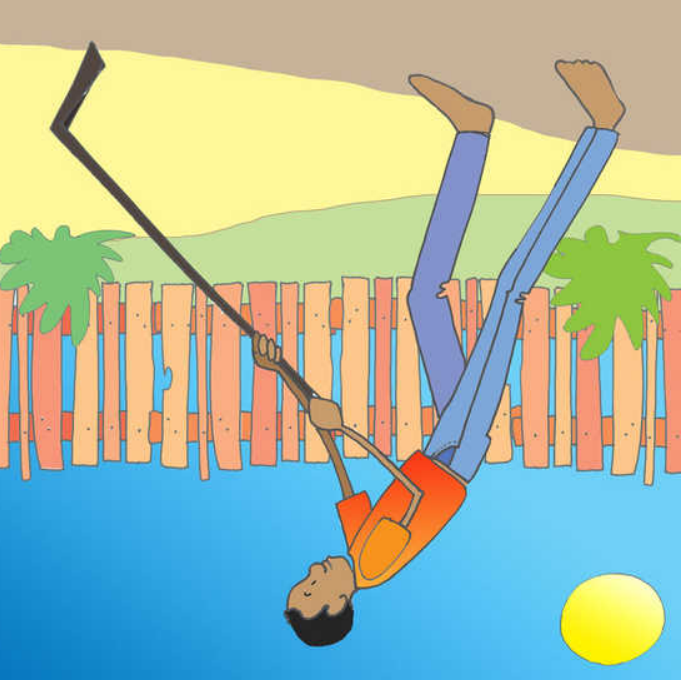
Aliacha nyumba yake na kuishi
katika msitu mkuwba. Aliishi
kwa miaka mingi.



Mtu huyu alikuwa mrefu zaidi!



Aliketi juu ya kiti kilichokuwa juu sana. Alikula kwa kutumia uma iliyokuwa ndefu mno.



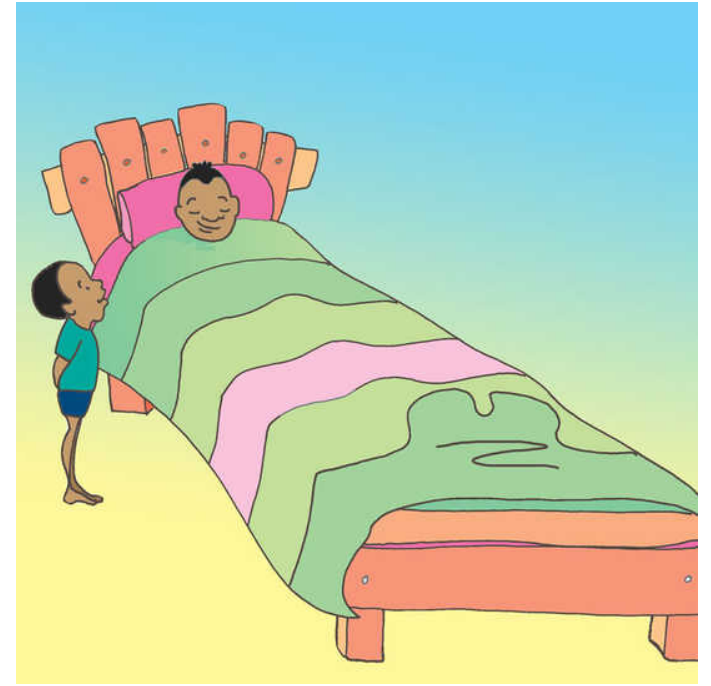
Alitengeneza mpini wa jembe
mrefu sana.



Akanunua baisikeli iliyokuwa
ndefu mno.



Alitengeneza fremu ndefu za milango.



Alitengeneza kitanda kirefu sana.