



Global Storybooks

globalstorybooks.net

Khelai akamba ndi Zomela

✎ Ursula Nafula
🔗 Jesse Pietersen
📄 David Sani Mwanza



This work is licensed under a Creative Commons
[Attribution 4.0 International License.](https://creativecommons.org/licenses/by/4.0)
<https://creativecommons.org/licenses/by/4.0>



🗨️ Chichewa ny

|| 2

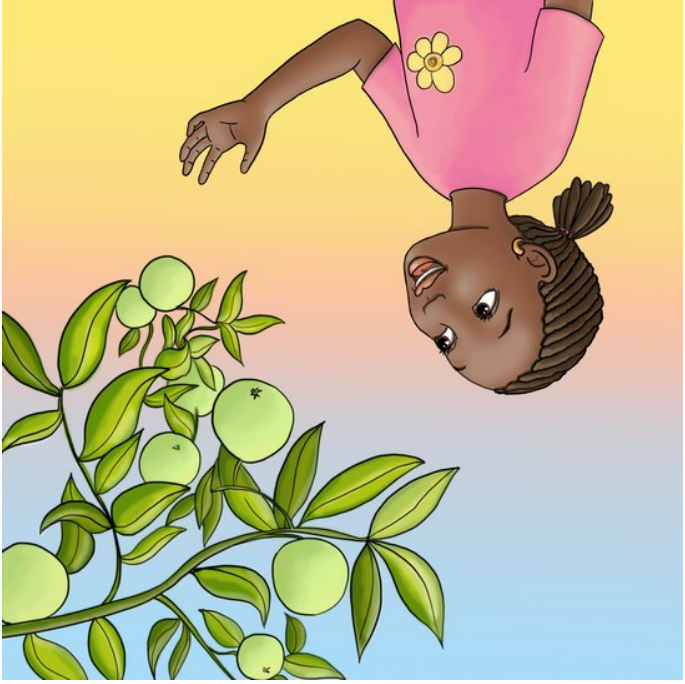
✎ Ursula Nafula
🔗 Jesse Pietersen
📄 David Sani Mwanza



**Khelai akamba ndi
Zomela**



Uyu ndi Khalai. Ali ndi zaka zisanu ndi ziwiri. Dzina lake litanthauza kuti “wabwino” mucilankhulo chake, Lubukusu.



khelai amauka ndikukmba ndi
mtengo wa malanje.
“Chonde, mtengo wamalanje,
kula ndipo utipatse malanje
ambiri akupsya”.



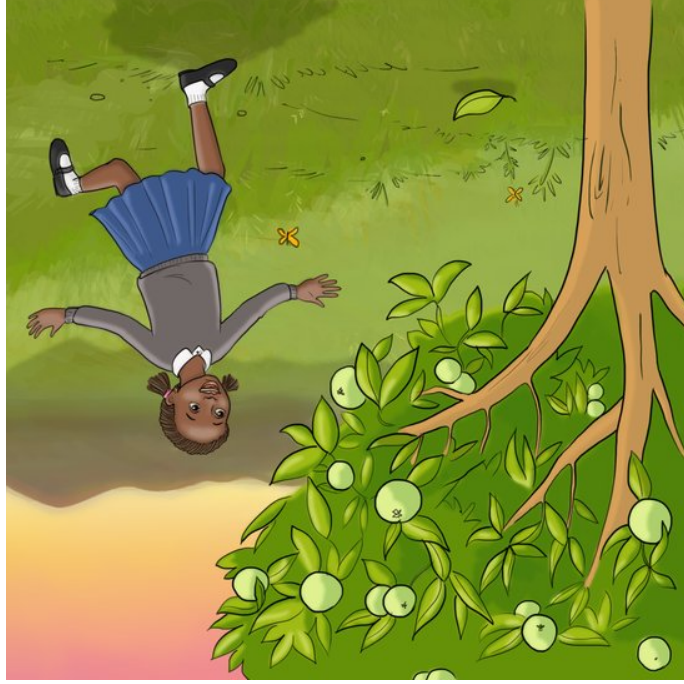
Khali ayenda ku sukulu. Pa njira, akamba ndi msipu. “Chonde, kula msipu ndikukhala obiliwira ndipo musaume.”



Malalanje akalibe kupya,” anena Khalai. “Mwina, uzandikhalira ndi lalanje lakupya”.



khalai apita pa maluwa
amthengo. "Chonde, maluwa,
pitilizani kukula kuti ndikukeni
mu tsitsi langa."



Pamene khalai abwelera
kunyumba, ayendera mtengo
walanje. "Kodi malanje ako
apsya kale?". Afunsa khalai.



Ku sukulu, Khalai akamba ndi mtengo pakati pa sukulu. “Chonde mtengo, khalani ndi nthambi zikulu kuti tiziwerengera pa pansi pa mtengo.



Khalai akamba ndi chitseko chakusukulu. “Chonde, kulani olimba ndiponso osalola anthu oipa kti alowe.