





Global Storybooks

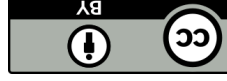
globalstorybooks.net

Bambo wamutali kwambiri!

 Cornelius Gulere

 Catherine Groenewald

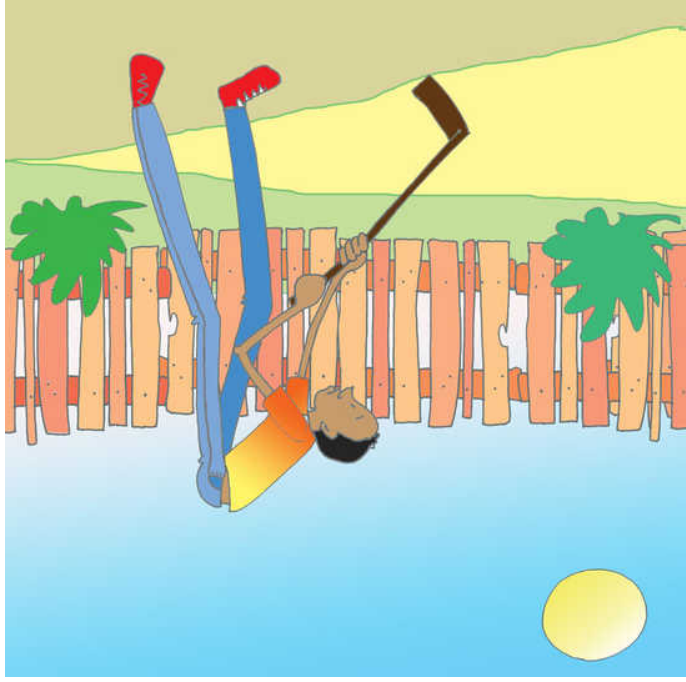
 David Sani Mwanza




This work is licensed under a Creative Commons
[Attribution 3.0 International License](https://creativecommons.org/licenses/by/3.0).
<https://creativecommons.org/licenses/by/3.0>



**Bambo wamutali!
kwambiri!**



 Cornelius Gulere

 Catherine Groenewald

 David Sani Mwanza

|| 2

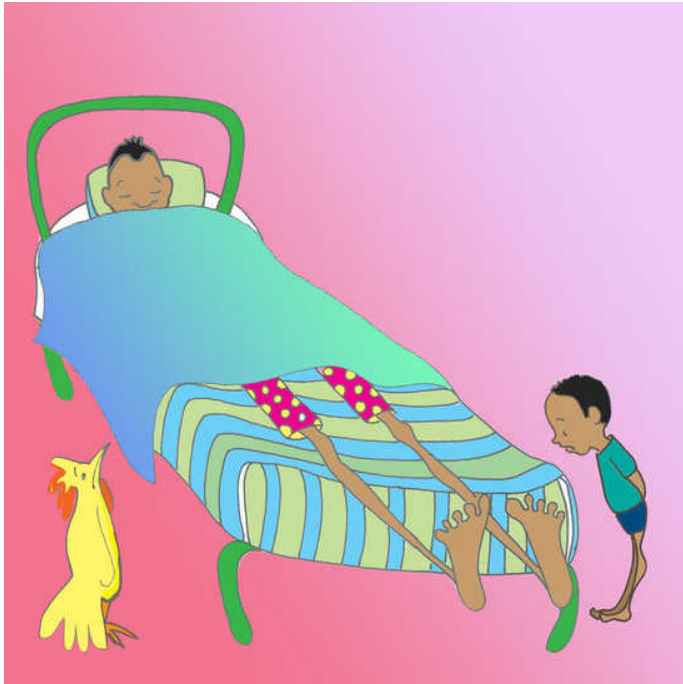
 Chichewa 



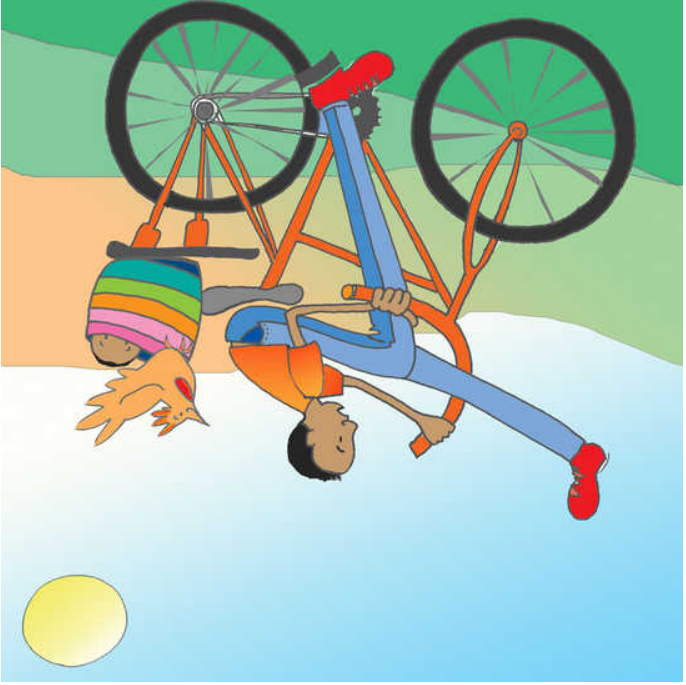
Khasu lake linali lalifupi
kwambiri.

Khomo lake linali lalifupi
kwambiri.





Bedi/kama lake linali yalifupi
kwambiri.



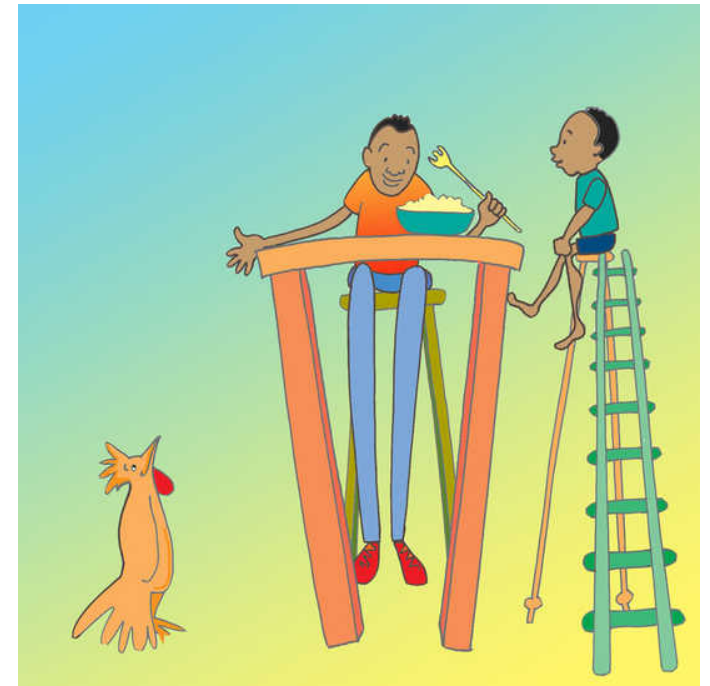
Njinga lake linali yalifupi
kwambiri.



Anachoka panyumba yake
ndipo anakhala ku thengo
lalikulu. Anakhala kwa zaka
zambiri.



Bambo uyu anali wam'tali kwambiri.



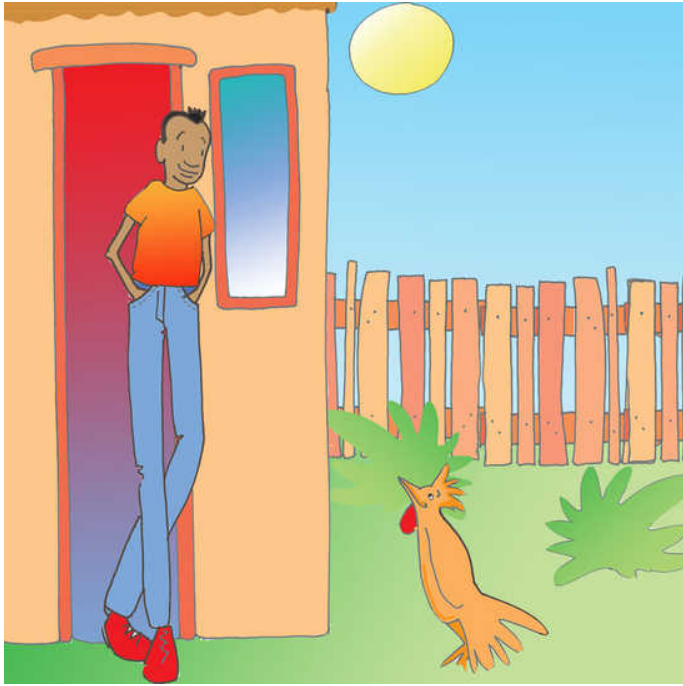
Anakhala pa m'pando wautali kwambiri. Anadya ndi foloko yaitali kwambiri.



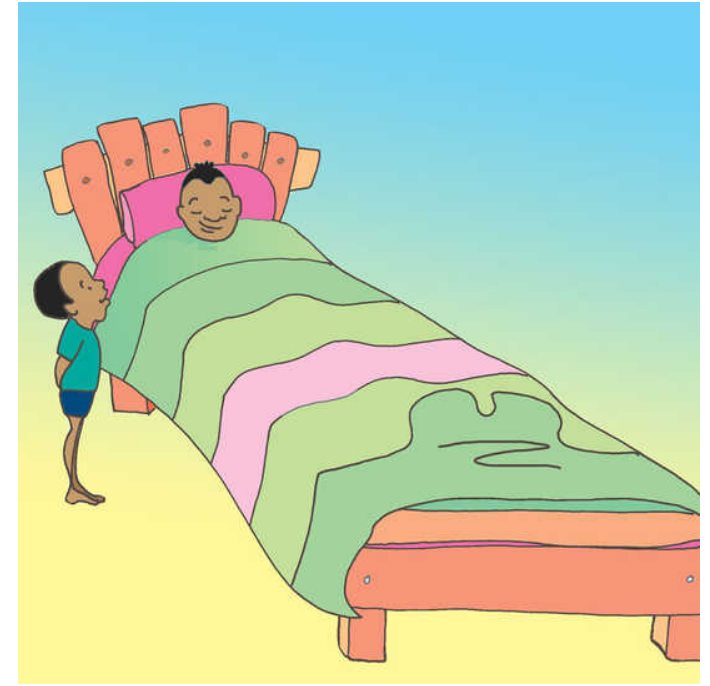
Anapanga chogwiliila khasu
chachitali.



Anagula njinga yaitali
kwambiri.



Anapanga khomo lake kukhala yaitali kwambiri.



Anapanga bedi/kama yaitali kwambiri.