

Ser Vusi ki pou dir ?



✎ Nina Orange

👤 Wiehan de Jager

📖 Shameem Oozerally & MIE French

Students

4

🗨️ kreol morisien



Global Storybooks

globalstorybooks.net

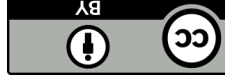
Ser Vusi ki pou dir ?

✎ Nina Orange

👤 Wiehan de Jager

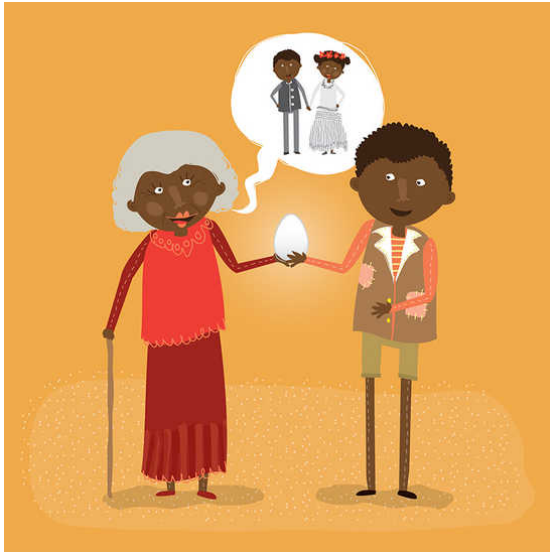
📖 Shameem Oozerally & MIE French

Students



This work is licensed under a Creative Commons Attribution 3.0 International License.
<https://creativecommons.org/licenses/by/3.0>





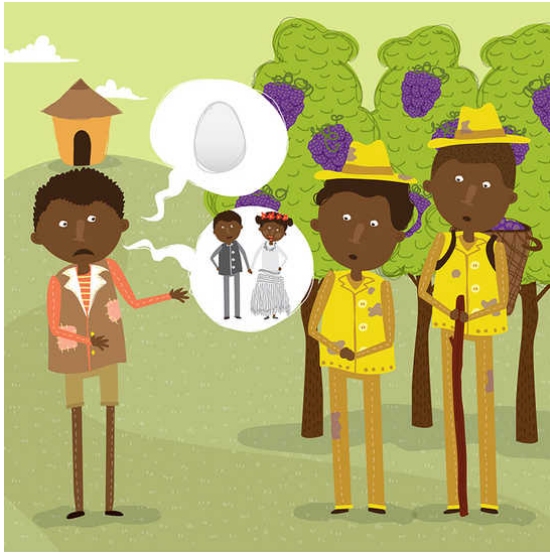
Enn gramatin boner, Vusi so gramer finn
apel li. « Vusi rann enn servis amenn sa
dizef-la pou to paran. Zot pe anvi fer enn
gro gato pou maryaz to ser. »



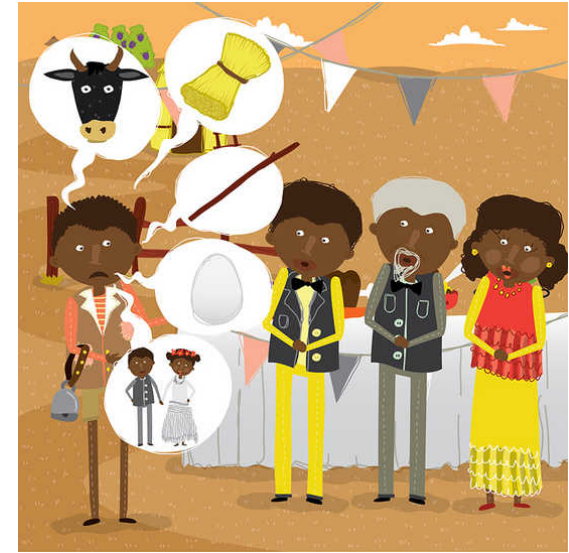
Ler li pe al kot so paran, Vusi finn rankont
de garson ki ti pe kas fri. Enn ladan finn
pran dizef-la e finn avoy li lor enn pie.
Dizef-la finn kase.



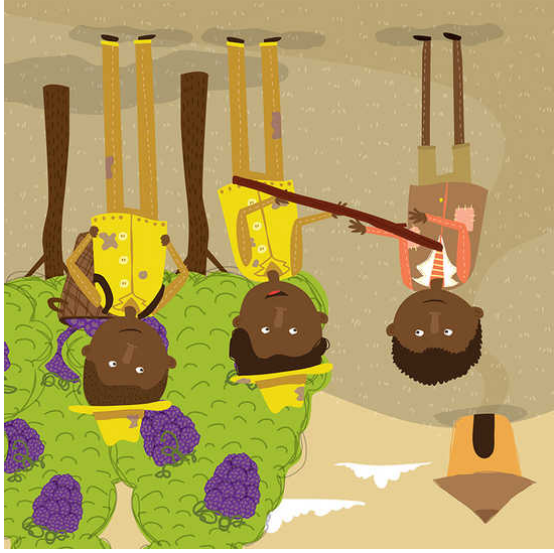
Vusi so ser finn reflesi pandan enn moman
apre li finn dir « Vusi, mo frer, mo pa kas
latet ar bann kado. Mo pa mem gagn traka
gato-la ! Nou tou ansam isi, mo erez.
Asterla, ale met to zoli linz et anou selebre
sa zour-la ! E samem Vusi finn fer.



Vusi, ki ti pe plore finn dir : « Ki to finn fer ? ». Sa dizef-la ti pou gato maryaz mo ser. La ki mo ser pou dir si pena gato maryaz ?



Vusi, ki ti pe plore, finn dir « Ki mo sipoze fer ? Vas ki finn sove la ti enn kado an esanz bot lapay ki bann mason ti donn mwa. Bann mason ti donn mwa sa bot lapay-la parski zot finn kas baton bann dimounn ki ti pe kas fri la. Bann dimounn ki ti pe kas fri-la finn donn mwa sa baton-la parski zot finn kas dizef ki ti pou servi pou gato. Gato-la ti pou maryaz. Asterla, nepli ena dizef, ni gato e pena kado. »



Bann garson-la ti sagrin ki zot finn takinn
Vusi. Enn ant zot finn dir « Nou pa pou
kapav ede pou gato-la, me ala enn baton-
marse pou to ser, ». Vusi pourswiv so
larout.



Me kan finn ariv ler pu dine, vas-la finn
sove et finn retourn kot fermie-la. E an
rout, Vusi finn perdi. Li finn ariv bien tar
pou maryaz so ser. Bann invite ti deza pe
manze.



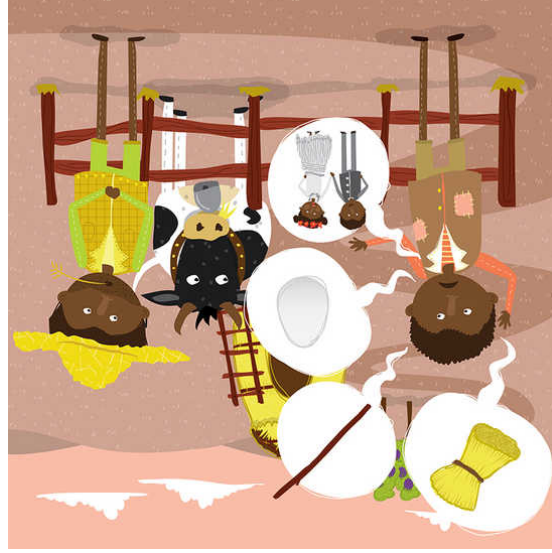
Lor sime, li'nn rankont de zom ki ti pe aranz enn lakaz. Enn ladan finn dimann-li « Eski nou kapav servi sa baton solid la ? » Me baton-la pa ti ase solid pou konstriksion-la e li finn kase.



Vas-la ti sagrin ki li'nn azir kouma enn gourman. Fermie-la finn aksepte pou ki vas-la al ek Vusi e servi kouma enn kado pou so ser. Vusi pourswiv so larout.



« Ki zot finn fer ? » Vusi ki ti pe plore finn dir « Sa baton-la ti enn kado pou mo ser. Bann dimoun ki ti pe kas fri inn donn mwa-sa akoz zot finn kas dizef pou gato. Gato-la ti pou maryaz mo ser. La pena dizef, pena gato, ek pena kado. Ki mo ser pou dir la ? »



Vusi, ki ti pe plore finn dir « Ki to finn fer ? Sa bot lapay la ti enn kado pou mo ser. Bann mason finn donn mwa-sa parski zot finn kas baton bann dimoun ki ti pe kas fri la. Bann dimounn ki ti pe kas fri la finn donn mwa sa baton-la parski zot finn kas dizef ki ti pou servi pou gato mo ser. Gato-la ti pou maryaz mo ser. Asterla pena dizef, pena gato et okenn kado. Ki mo ser pou dir la ? »



Bann mason-la ti sagrin ki zot finn kas baton-la. Enn ladan finn dir « Nou pa pou kapav fer nanye pou gato-la me ala enn bot lapay pou to ser ». Vusi pourswiv so larout.



An rout, Vusi finn zwen enn fermie ek enn vas. Vas-la finn diman li « bot lapay-la paret bon, mo kapav pan inpe ? » Me bot lapay-la ti telman bon ki vas-la finn manz tou.