



Global Storybooks

globalstorybooks.net

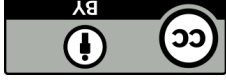
Simbegwire

✎ Rukia Nantale

👤 Benjamin Mitchley

📁 Shameem Oozerally & MIE French

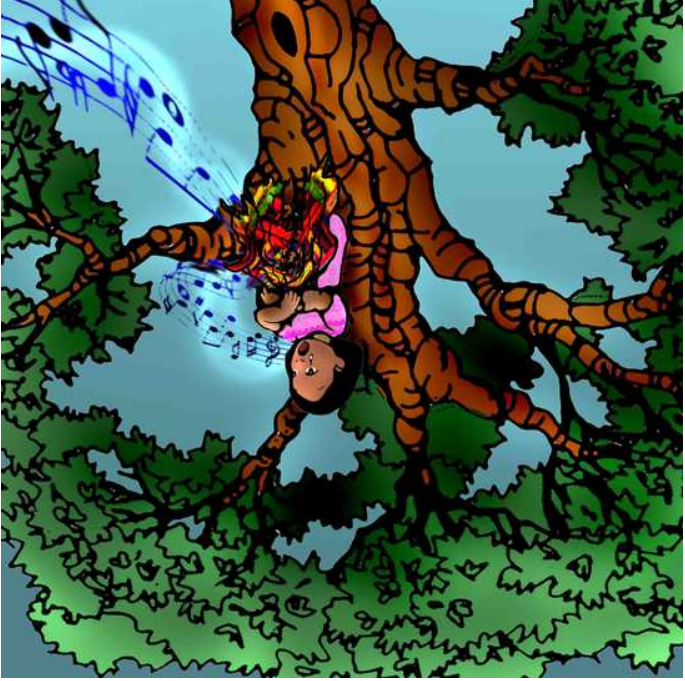
Students



This work is licensed under a Creative Commons
[Attribution 3.0 International License](https://creativecommons.org/licenses/by/3.0).
<https://creativecommons.org/licenses/by/3.0>



Simbegwire



✎ Rukia Nantale

👤 Benjamin Mitchley

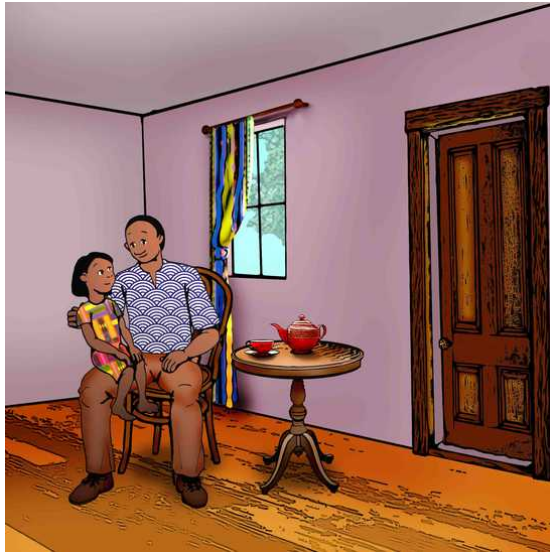
📁 Shameem Oozerally & MIE French

Students

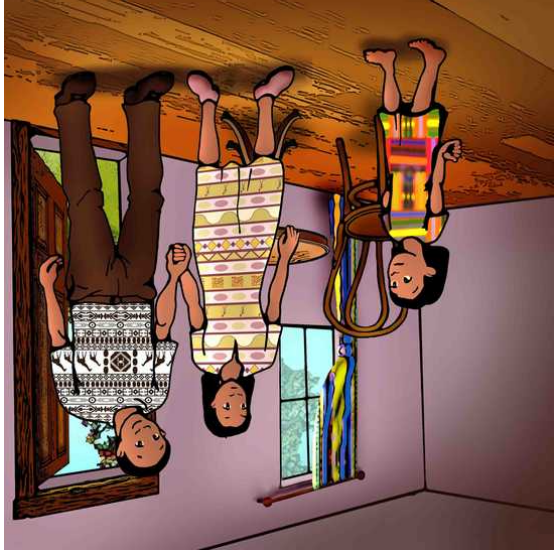
|| 5

🗨️ kreal morisien

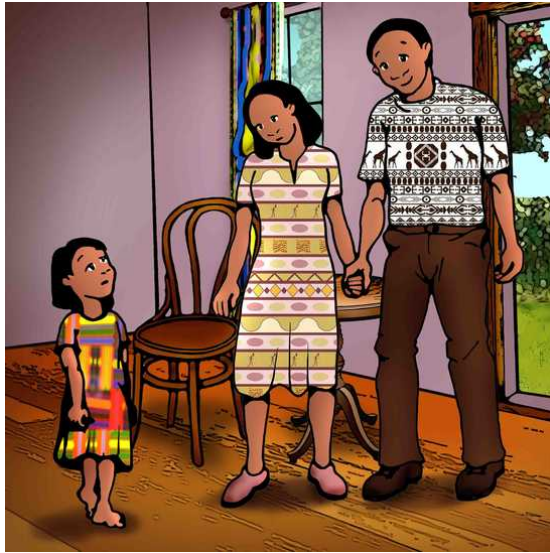




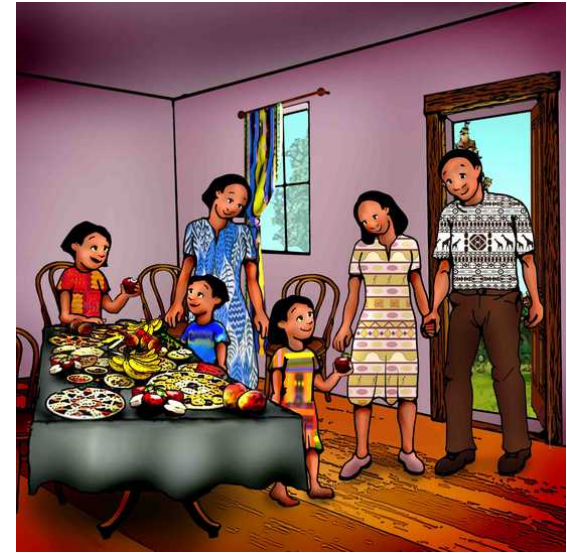
Kan mama Simbegwire finn mor, li ti bien tris. So papa finn sey tou so posib pou pran swin so tifi. Dousman dousman, zot finn aprann kouma pou santi zot ere san mama Simbegwire. Sak gramatin, zot asize et diskrit zot prosin lazourne. Sak swar, zot kwi manze ansam. Apre ki li fini lav lasiet, papa Simbegwire ed li fer so bann devwar.



Enn zour, papa Simbegwire finn retourn
lakaz pli tar ki dabitid. Li kriye : « kot twa
mo baba ? » Simbegwire galoupe al get so
papa. Li aret enn sel kou kan li'n trov li
trap lame enn madam. Li dir avek enn
sourir « mo'n anvi prezant twa enn
dimoun spesial, mo baba. Anita. »



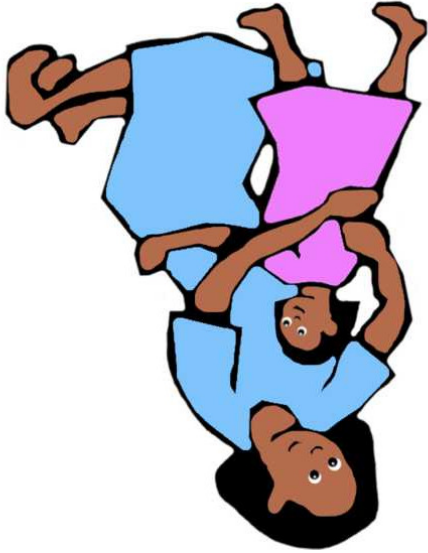
« Bonzour Simbegwire, » Anita dir « to papa inn koz boukou lor twa ». Me li pa ti pe riye e li pa finn donn Simbegwire lame. Papa Simbegwire ti kontan ek eksite. Li dir ki zot tou le trwa pou viv ensam ek zot pou ena enn bon lavi. Li dir « mo baba, mo espere to pou aksepte Anita kouma to mama. »



Semenn answit, Anita finn invit Simbegwire, so bann kouzinn ek so matant pou manze kot li. Bel fet ! Anita inn kwi tou manze ki Simbegwire kontan manze ek zot tou inn manze ziska ki zot inn plin. Answit, bann zanfan finn zwe tandi ki bann adilt ti pe koze. Simbegwire ti pe santi li zwaye ek brav. Li'nn deside ki biento, bien vit, li pou retourn kot li pu viv ek so papa ek so mama belmer.



Lavi Simbegwire kumans sanze. Li pa ti ena letan pou asize ek so papa gramatin. Anita ti pe donn li telman louvraz ki li ti fatige pou fer so dewar aswar. Li ti pe al dormi direk apre ki li ti fini manze. So sel rekonfor ti dra kouler-kouler ki so mama ti fer pou li. Papa Simbegwire pa ti pe remarke ki so tifi ti malerez.



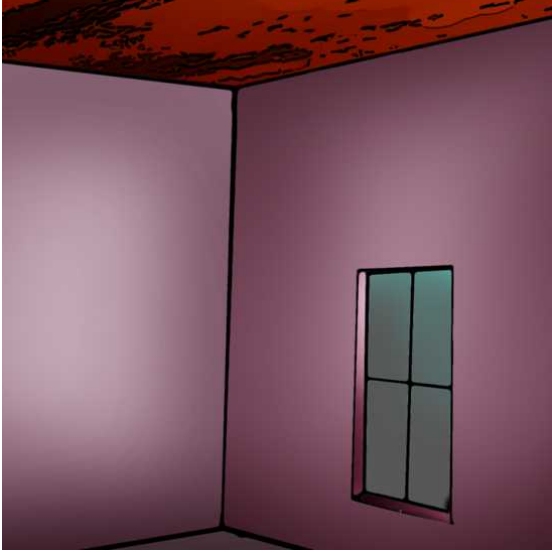
So papa ti pe vizit li toule zur. Finalman, li'n vinn ek Anita. Li'n pran Simbegwire so lame dan so lame. « Sori tipti, mo ti ena tor, » li'n ploze. « Eski to pou donn mwa ankore enn sans ? » Simbegwire finn examinn so papa ek so regar trakase. Leri la li'n fer enn pa dousman an-avan ek li'n may Anita.



Après plizier mwa, papa Simbegwire dir ki li pou parti pou enn bon moman. Li dir : « mo bizin vwayaze pou mo travay, me mo kone zot pou okip zot kamarad bien. » Figir Simbegwire sanze me so papa pa ti remarke. Anita pa dir nanye. Li pa ti kontan li si.



Simbegwire ti pe zwe ek so bann kouzinn kan li'nn trouv so papa de lwin. Li ti pe per atansion li ankoler, alor li'nn galoupe li'nn al kasiet andan. Me so papa finn vinn get li ek inn dir li, « Simbegwire, to'nn gagn enn mama perfe. Enn mama ki kontan twa ek ki konpran twa. Mo fier de twa ek mo kontan twa. » zot finn dakor ki Simbegwire pou res ek so matant osi lontan ki li anvi.



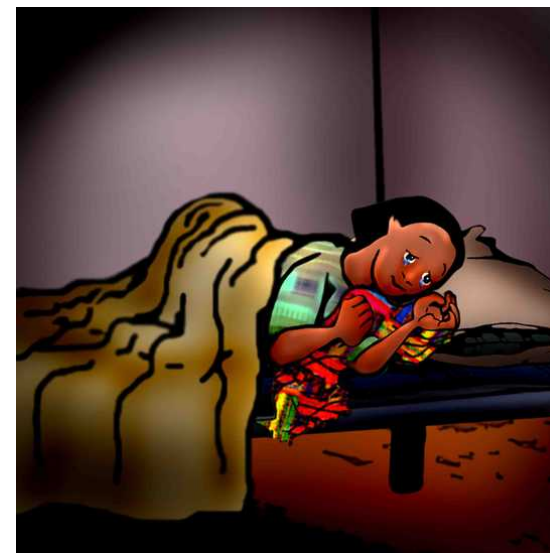
Kan Simbegwire so papa finn rant lakaz, li
finn trov so lasam vid. « Ki'n arive, Anita
? » li'n demande avek enn leker lour.
Madam-la inn explik li ki Simbegwire inn kit
lakaz. « Mo ti anv! li respekte moi, » li'n
dir. « Me kapav mo ti tro sever. »
Simbegwire so papa finn kit lakaz ek finn al
dan direksion rviso. Linn kontinie ziska
vilaz so ser pou gete si li'n trov
Simbegwire.



Bann zafer koumanse vinn pir pu
Simbegwire. Si li pa ti fini louvraz ouswa si
li ti plengne, Anita ti pe bat li. Pou dine
madam-la ti p manz preske tou manze e
Simbegwire pa ti pe gagn nanye. Toule
swar, Simbegwire ti pe dormi an larm dan
dra so mama.



Enn gramatin, Simbegwire finn gagn tar pou leve depi lor so lili. « Pares ! » so mama kriye. Li tir Simbegwire lor so lili. Kouvertir presie la may ar enn koulou ek desir an de.



Simbegwire so matant finn amenn li kot li. Li'nn donn Simbegwire enn repa so ek li'nn fer li dormi avek molton so mama. Sa lanwit-la, Simbegwire inn plore inn dormi. Me so bann larm ti bann larm lazwa. Li ti kone ki so matant pou get li bien.



Simbegwire ti bien boulvèrse. Li'n desid pou sove depi kot li. Li'n pran enn bann bout kouvertir so mama, inpe manze ek li finn kit lakaz. Li'n swiv sime ki so papa ti pran.



Sa madam-la finn get dan pie. Kan li'n trov tifi-la ek bann bout kouvertir tou frer i « Bann lezot madam-la aret lave ek finn ed Simbegwire pou depilor sa pie-la. So matant anbras li ek esey rekonfort li.



Kan finn ariv aswar, li'nn mont lor enn gran pie pre kot enn rviso ek li'nn fer enn lili pou limem dan bann brans. Kan li ti pe al dormi, li sante, « Mama, mama, mama, to'nn kit mwa. To'nn kit mwa e to pa'nn retourne zame. Papa nepli kontan mwa. Mama, kan to pou revini ? To'nn kit mwa. »



Landemin gramatin, Simbegwire ti pe sant sante-la ankor. Kan bann madam finn ariv kot rviso pou lav zot linz, zot finn tann sa sante tris ki ti pe sorti depi sa gran pie-la. Zot finn panse ki bann fey ki ti pe fer tapaz e zot inn kontign zot travay. Me enn dan sa bann madam-la finn ekout sante-la bien.