



**Global Storybooks**

[globalstorybooks.net](http://globalstorybooks.net)

**Simbegwire**

✎ Rukia Nantale  
👤 Benjamin Mitchley  
📁 Amos Mubunga Kambere



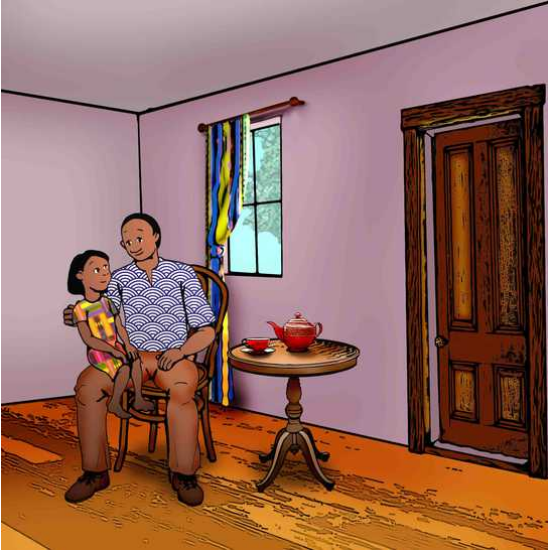
This work is licensed under a Creative Commons  
[Attribution 3.0 International License](https://creativecommons.org/licenses/by/3.0).  
<https://creativecommons.org/licenses/by/3.0>



**Simbegwire**



✎ Rukia Nantale  
👤 Benjamin Mitchley  
📁 Amos Mubunga Kambere  
|| 5  
🗨️ Olukonjo koo



Simbagwire mwabya nobulighe bunene, mama wiwe abiriholha. Thatha wa Simbagwire mwalengaho kutsibu erilembere mwali wiwe. Neryo bolhobolho mubatsuka eritsangatsanga isihali mama wa Simbagwire. Obulingyakya bakikalha nerihanulha okwa ebikendikoleka ekiro ekyo. Obul'igholhogholho bakahuka akalyo haima, neryo iberya esya bakuli haima. Thatha wa Simbagwire inyawathikya okw'amasomo aw'eka.



Kiro kighuma thatha wa Simbagwire  
mwasa omwighoholho kutsibu.  
“Ulihay! mwana waghhe” mwabirikira.  
Simbagwire mwasa akathibitha eyiri thatha  
wiwe. Neryo mwimana akalhangira thatha  
wiwe akasa inyanahambire okuboko  
kwomumbesa. “Nyanzire wusangangane  
n’omumbesa wembaghane, mwana  
waghhe. Ono ni Anita”, mwabughha  
inyanemuseka.



“Kuthi Simbagwire, thatha waghuru abirimbwira mwatsi munene okwiwe”, Anita akaramukya. Aliryo mwatha seka kandi mwathimya nebyalha biwe. Thatha wa Simbagwire abya n’etseme nene. Mwakania okwabosi basathu erikalha haima. nobuyingo bwabo kubukendiwana. “Mwana waghe, ngawithe erilengekania indi ukendirigha Anita eribya mama waghuru”, mwabugha athya.



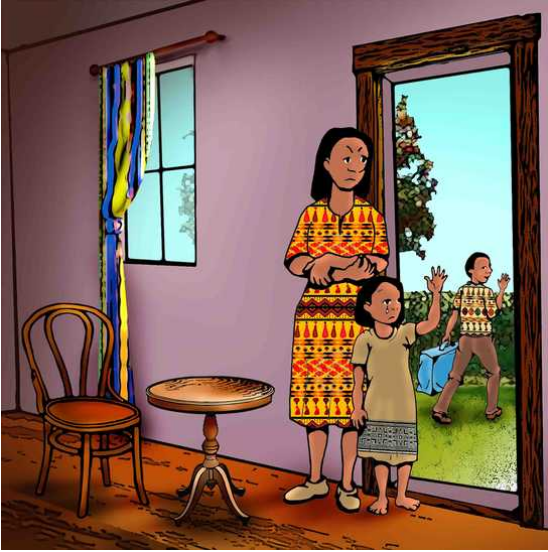
Esabiti eyasubukako, Anita mwathumira Simbagwire, mwaliwabu haima na songali wiwe, eryasa eka ewiwe erisalya ekihulho. Anita mwahuka ebyalya Simbagwire eby’anzire kutsibu. Mubalya bamoghutha ndeke. Abana bamayasatha neryo nabakulhu bamaghenda omwa muliira. Simbagwire mwatsanga kutsibu kandi amayira amani. Neryo amatwamo ati omwabiro bithebyahali akendisyasubulha inyayikalha na thatha wiwe haime na mamulere wiwe.



Obuyingo bwa Simbagwire  
mubwahinduka. Mwathasyathunga  
endambi yerikalha na thatha wive  
omwanyakya. Anita mwatsuka erimuha  
emibiri mine ne eyerikolha neryo  
mwathasya thunga obuthuku  
bwerisomera eka omwighoho.  
Banabiriwunza eriya neryo inyaiwusa  
omwanyingo. Amalighe iwe eriyaghunzira  
womw'akabbulangiti mama wive  
amusighira. Thatha wa Simbagwire  
mwathalangira mwali wive kwathakiri!  
nebitsange.



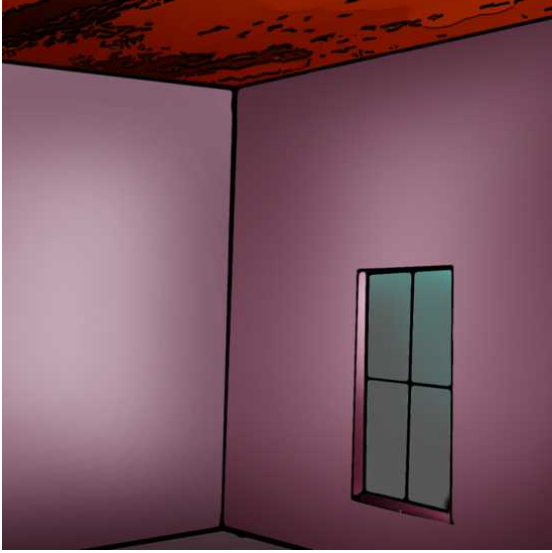
Thatha wive inyakasamulebaya bulikiro.  
Neryo mwalandwa inyamasa na Anita.  
Anita amamuha ebyalha ati Simbagwire,  
unganyire mwana, munakusoberya,  
"wanganaleka inathasyakulembera?"  
Simbagwire mwasamalira obusu  
bwathatha wive, neryo amaseghere  
embere amahira amaboko wive  
iribumbatirwa na Anita.



Emyisi miki yabirihaba, thatha wa Simbagwire mwabwirabo athi akendibulhaho habwa kathuku kake. “Ngendighenda habw’omubiri waghe”, nyinasi mukendiwathikania. Obusu bwa Simbagwire neryo mubwakina, aliryo thatha wiwe mwathalhangira. Anita mwathabugha kindu. Nayo mwathanza nahake.



Simbagwire abya inyanimusatha namwaliwabu, akalhangira thatha wiwe omwa lhuyira. Mwasagha ati mbwino akendimutsumanga, neryo amathibitha omwanyumba eriyabisama. Aliryo thatha wiwe mwaghenda eyali, neryo abugha ati, “Simbagwire wabirisunga omubuthi omubuya. Oyukakuyitheghereraya, kandi nerikwanza. Wamanyiha kwesisoni, kandi nga kwanzire. Neryo bamathwamo bathi Simbagwire akwame kwerekalha na songali wiwe.



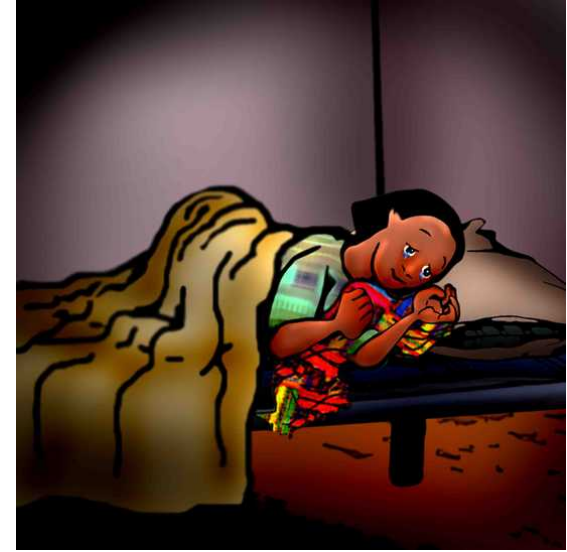
Thatha wa Simbagwire abere asubuha, mwasangana ekisenge kya mwali wiwe ikine buyira. "Anta, yabereki eno" amabulya nomuthima wobulighe. Omughole amathulhawo ati Simbagwire athibithire. "Munanza indi ambire mwe kitsumbi, mbwino munamukalhako kutsibu". Thatha wa Simbagwire mwaliw'eka neryo amaghenda omwanzira eyikaghenda elhusi. Neryo amaghenda ewa mwaliwabu akayalebya nganabwene Simbagwire.



Ebindu byamasighalha bikakalira Simbagwire. Amethendiwunza emibiri yiwe, kutse amayibughanganisya, Anta inyaka muhumba. Nokondambi eyerirya omuhuka ono inyakalya ebalya ebयोsi erisakirya Simbagwire otutahangukirya. Obulighoihoghohlo, Simbagwire inyakayithwalha omwa kakyingo kiwe neribumbathira akabbuliangiti kamama wiwe amusighire okwa kikuba.



Kiro kighuma, omwangyaka, Simbagwire  
mwatselewa erilwa omwa kakingo kiwe.  
"Iwe musika mughara" Anita akatsuruma.  
Akapura Simbagwire yomwakakingo kiwe.  
Akabbulangiti akabuya mukahathira  
omwamusumali, neryo kamatamuka  
mwabipindi bibiri.



Songali wa Simbagwire mwamuthwalha  
ewiwe eka. Amahereya Simbagwire  
yebyalya ebihuhire, nerimuhira omwa  
kitanda haima nakabbulangiti kamama  
wiwe. Ekiro ekyo, Simbagwire mwalira  
akayabotsera. Aliryo yabya misoni  
yerihumulikania. Mwaminya athi songali  
wiwe akendimulembere ndeke.





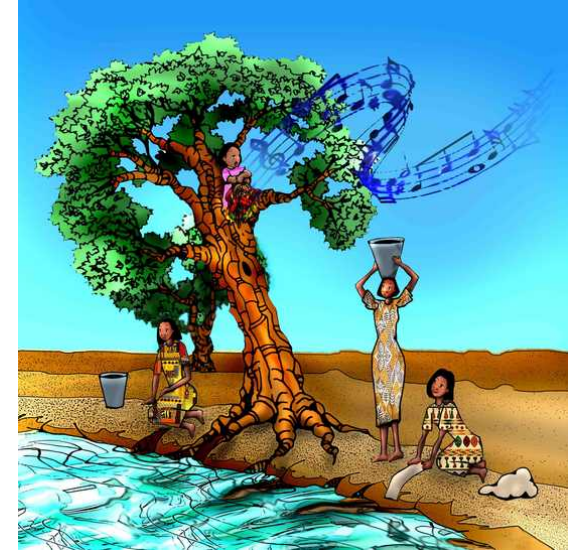
Simbagwire mwahithana kutsibu. Neryo amathwamo erithibitha erilhwa omwa myi. Amaboha othubulangiti twiwe, amaboha netwalya, neryo amaghenda. Mwakwama olhuyira olhwa thatha wiwe alhabamo ekiro aghenda.



Omghole ono mwasamalira omwa muthi. Abere alhangira omwana wobukali, n'otubulangiti ithunemukangabasanya, mwalira emisoni, neryo abirikira, Simbagwire, omwana wa mughalha wethu! Abaghole abandi mubaleka erioya ebisomeko byabo neryo bamawathikya Simbagwire erikyima omwamuthi. Neryo songali wiwe amabumbathira akambesa, nerikahumulikania.



Obuthuku bwabere bukira, neryo  
 amasamba omwa muthi hakuhi nolhusi,  
 neryo amakolha engyingo yiwe  
 omwamuthi. Abere akayawotsera, amimba  
 olhwimbo: "Maama, maama, maama,  
 muwanzigha. Muwanzigha kandi wamaani  
 subulha. Thatha syakyinyanzire. Mama,  
 ghukendisyasubulha kiro kyahi?  
 Wabirinzigha."



Omwangyaka ekindi kiro, Simbagwire  
 mwimba olhwimbo lhwawe kandi.  
 Abaghole babere bakasa erisoya  
 ebisomeko byabo, mubowa olhwimbo  
 lhw'obulighe lhukalhwa omwa muthi.  
 Mubalengekania ambu obundi nirihunga  
 likaghendesaya emithi, neryo  
 mubathatsomana. Aliryo omughuma  
 okwabaghole mwahulikirira olhwimbo  
 lhwandeke.