



Global Storybooks

globalstorybooks.net

Magozwe

✎ Lesley Koyi

👤 Wiehan de Jager

📁 Eunice Mukonde-Mulenga



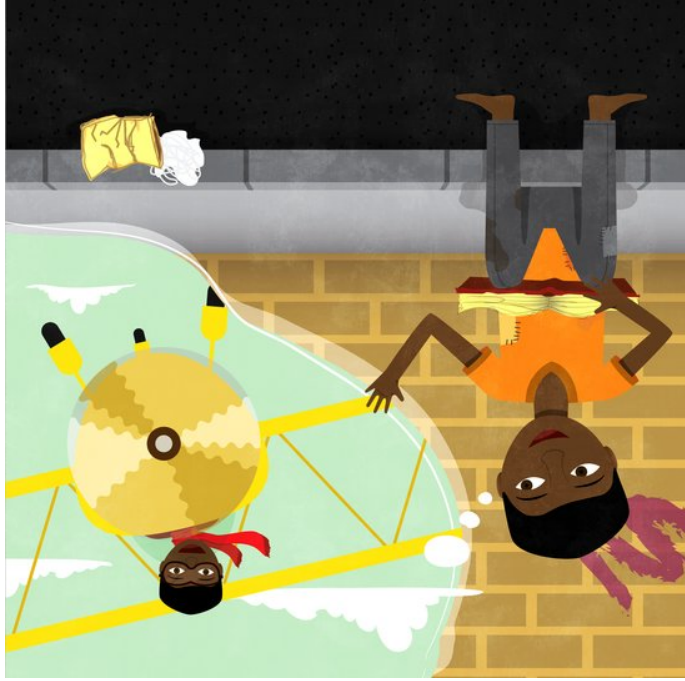
This work is licensed under a Creative Commons

[Attribution 4.0 International License.](https://creativecommons.org/licenses/by/4.0)

<https://creativecommons.org/licenses/by/4.0>



Magozwe



✎ Lesley Koyi

👤 Wiehan de Jager

📁 Eunice Mukonde-Mulenga

|| 5

😊 IciBemba bem



Mwi tauni Iya Nairobi, ukutali nendupwa,
kwaleeikala abalumendo abaabula
indupwa. Baaleeikalafye cikulu bwaca.
Uluceelo lumu, abalumendo baaleelonga
impasa shabo panuma yakulala mumpepo
mumbali yanshila. Ukubomfya ifisooso,
baalikoseshe umulilo pakutamye mpepo.
Pali ili bumba paali Magozwe. Ewaali
umwaice saana.



Ilyo abatyashi bakwa Magozwe baatwile,
aallfye neemyaka isaano. Aile mukwikala
na banalume. Banalume tabapooseleko
amaano kumwana. Magozwe
tabaalempupeela ifyakulya fyakumanina.
Baalempupeela incito shakumbomba
ishingi.



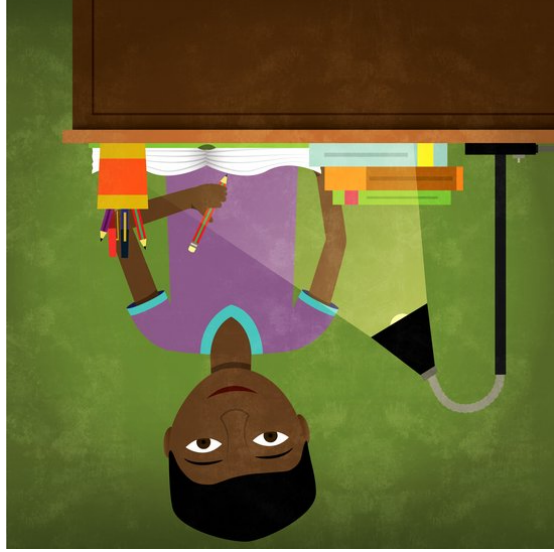
Nga Magozwe ati epushe neelyo ukuilishanya, banalume baaleemuma. Ilyo Magozwe aipwishe palwa kuya kusukulu, banalume baalimumine nookutila, "Iwe taumfwa. Tapali ico wingasambilila." Panuma yamyaka itatatu iya kumusunga ifi, Magozwe aalibuutwike ukufuma pang'anda yabanalume. Aambile ukwikala mumusebo.



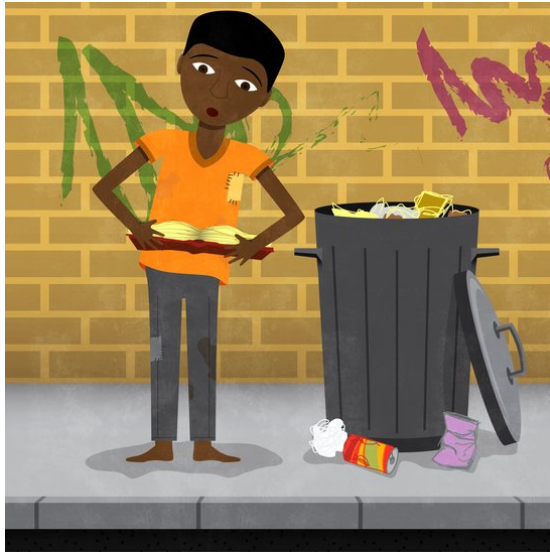
Magozwe aikeele panse mulubansa lwang'anda yamutenge wagilini, aleebelenga ibuuku lya kusukulu. Elyo Thomas aikeele mupeepi nankwe. "Lilelanda pali cinshi ilyashi?" Thomas aipwishe. "Lilelanda pamulumendo asangwike kafundisha," efyaaswike Magozwe. "Naani ishina umulumendo?" efyaipwishe Thomas. "Ishina lyakwe ni Magozwe," efyaaswike Magozwe aleemwentula.



Ukwikala pamusebo kwali ukwayafya kabili
 abalumendo abengi baaleecuula cila
 bushiku pakusanga icakulya. Inshiku shimo
 baaleboom, shimbi baalebeekata kuli
 bakapokola. Nga baalwala takwaleeba
 aba kubaafwa. Ulupiya baalesanga
 mukulombalomba, mukushitsha
 amapulasitiki nafimbi
 elwaleebaafwiliishako. Ubuumi
 bwalyafisheko pantu amabumba yambi
 aya balumendo yaaleefwaya ukpoka
 incende shapusanapusana mutauni.



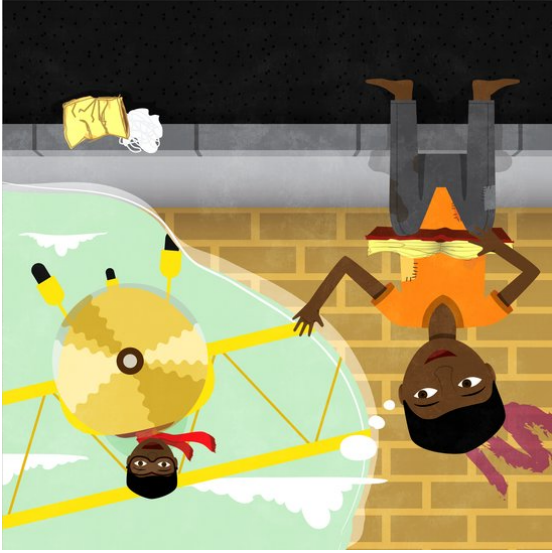
Magozwe alyambile isukulu kabili
 Iyalikosele. Fingi ashaishibe ifyo aalingile
 ukwishiba pakuti aalingane nabanankwe.
 Limolimo aleefwaya ukuleka. Leelo
 pamlandu weetontonkanyo pali kensha
 wandeke nakateya wampila
 abamumabuku yakwe, taalekele nga filya
 fine nabo bashalekele.



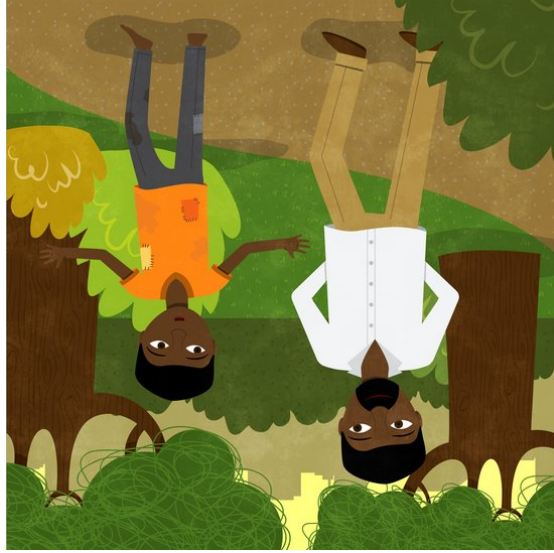
Bushiku bumo ilyo Magozwe
aleefwayafwaya mufisooso, asangile
ibuuku ilyakale ilyalepauka. Afumisheko
ifiko aalibikile namwisaaka. Cila bushiku,
aleefumya ibuuku nookwamba ukulolesha
pafikope. Taishibe ukubelenga.



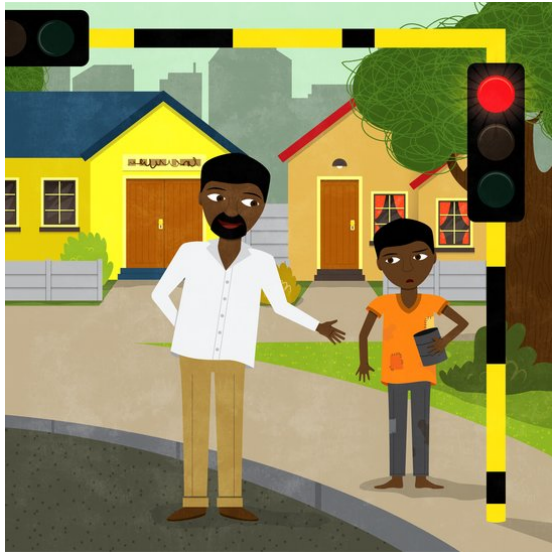
Lyene Magozwe aile mukwikala
mumuputule mung'anda yamutenge
wagilini. Aleekalamo na balumendo babili
bambi. Bonse pamo abaana baali ikumi
abaleekala muli ilya ng'anda. Elyo naba
Baamaama Cissy nabalume baabo
neembwa shitatu, puushi elyo neembushi
iikote.



Ifikope fyalaelanga umlumendo
 uwaishibeba kensha wandeke ilyo aakulle.
 Magozwe aleloota namukasuba
 palwakuwa kensha wandeke. Inshita shimo
 aleemona ukuti emlumendo wine uwa
 mwibuku.



Abele Thomas ati aali no mwenso.
 Thomas alimwebekesha ati akeekala bwino
 kuncende ilya.



Kwalitaleele kabili Magozwe aiminine pamusebo aleelombalomba. Umwaume umo aishile mupeepi napo aali. “Uli shaani? Nine Thomas. Momba mupeepi napano, pancende wingapoka icakulya,” eflyo atiile. Asontele kung’anda yayeelo noomutenge wabuluu. “Ninjishiba, walaayapoka ifyakulya?” eflyo aipwishe. Magozwe aloleshe umwaume elyo aloleshe kung’anda. “Limbi ndeeya,” eflyo aaswike afumanapo.



Magozwe atontonkenye pancende ukwakulaala kabili nookuya kusukulu. Nga limbi ifyo banalume bamwebele ati toomfwa teeti asambilile icili conse fyaciine? Nga cakuti kulya kuncende bamuuma? Alitiinine. “Limbi cawamapo ukutwalilila ukwikala mumusebo,” eflyaatontonkenye.



Imyeshi yakonkolepo, abalumendo
 baalibeeshhe ukumona Thomas.
 Alitemenwe ukulanda nabantu makamaka
 abaleekala mumusebo. Thomas
 aleumtwa amalyashi ya bantu aba. Aali
 uuposa amano kufintu kabili uwacikuu ku
 noomcinsihi. Abalumendo bamo,
 baambile ukuya kung'anda yayeelo
 nabuluu mukupoka ifyakulya akasuba.



Ilyo Magozwe aali nemyaka ikumi Thomas
 alimupeele ibuuku. Ibuuku lyali
 pamulumendo wamumushi uwaleeteya
 umpila uwalumbwike saana. Thomas
 alimubelengele Magozwe ili lyashi imiku
 iingi mpakafye bushiku bumo atilile,
 "Ndetontonkanyefyo uilingile
 ukutampeesukulu pakuti usambilile
 ukubelenga. Uleetontonkanyapo shani?"
 Thomas atilile alishibepe incende uko
 abana benga laala nookuya kusukulu.



Magozwe aikele mumbali yanshila aleetamba ifikope mwibuuku lyakwe ilyo Thomas aishileeikala mupeepi nawene. "Lileelanda pali cinshi ilyashi?" eflyo Thomas aipwische. "Lileelanda pamulumendo uwasangwike kensha wandeke," eflyaaswike Mazongwe. "Naani ishina umulumendo?" Thomas aipwische. "Katwishi, nshaishiba ukubelenga," eflyaaswike Mazongwe panoono.



Ilyo baakumeene, Magozwe atendeke ukweba Thomas ilyashi pa buumi bwakwe. Amwebele ifyo abuutwike ukufuma kuli banalume. Thomas taalaandile ifingi kabili taebele Magozwe ifyakucita leelo aleeumfwikishafye. Limolimo baleelanshanya ilyo baleelya mung'anda yamutenge wabuluu.