

# Khalai alitemwa ifilimbwa



✎ Ursula Natula

🔗 Jesse Pietersen

📧 Margaret Nambao, Agnes Chileshe

Chibamba

|| 2

🗨️ IciBemba



# Global Storybooks

[globalstorybooks.net](http://globalstorybooks.net)

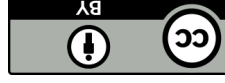
## Khalai alitemwa ifilimbwa

✎ Ursula Natula

🔗 Jesse Pietersen

📧 Margaret Nambao, Agnes Chileshe

Chibamba



This work is licensed under a Creative Commons

[Attribution 4.0 International License.](https://creativecommons.org/licenses/by/4.0)

<https://creativecommons.org/licenses/by/4.0>





Uyu ni Khalai. Ali nemyaka  
cinelubali. Mu Cibemba, Ishina  
lyakwe lipilibula “umuntu  
umusuma”.

Lyonse khelai nga ashibuka  
alalaanda ku cimuti cama  
cungwa ati: "Wecimuti cama  
cungwa, napapata kula,  
utwaale namacungwa ayengi,  
utpeleko tuiyeko."





Khalai nga aleenda lyonse  
pakuya kusukuulu alalaanda  
kufyani ati: "We cani,  
napapaata moneka uwayemba  
elyo kabili wilauma."

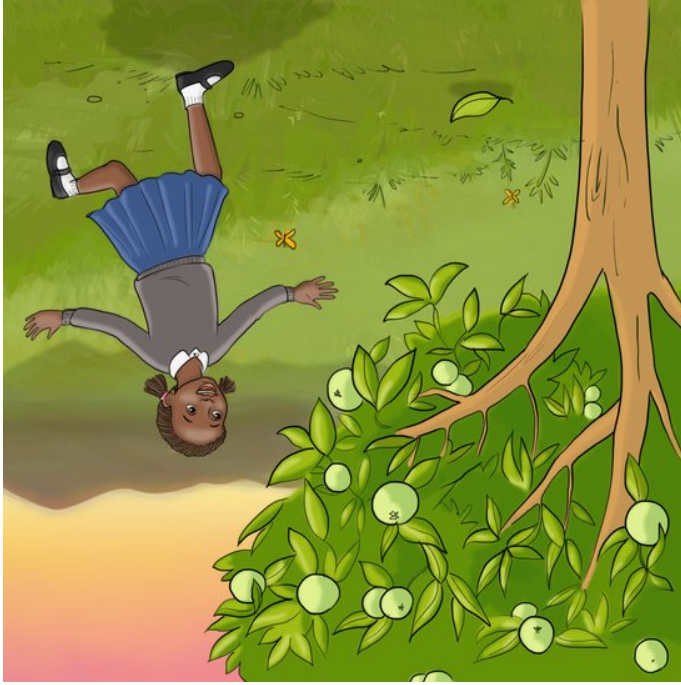


Aaaa! Amacungwa yacili  
ayabishi! Nkesa kumonako  
nakabili mailo. Limbi  
nkasangako nangu icungwa  
limo nalipya.

khelai nga asaanga amaluba  
 yampanga nayo alayeba ati:  
 “Mwe maluba mulbaluula  
 bwino bwino pakuti ndeswako  
 nokufwala mumutwe wandi!”



khelai nga ainuka lyonse, alaya  
 mukupempula icimuti  
 camacungwa nokucipuusha ati:  
 “Bushe amacungwa yobe  
 nanoomba tayalapyaya?”





Khalai nga afika kusukulu,  
lyonse alalaanda kucimuti  
icabeela pakati kalubansa  
lwesukulu ati: “Wecimuti,  
napapaata kula utwale  
nemisaambo iyakutupeela  
icintelelwe icakuti tuleikalamo  
pakubeleenga.”



Elyo kabili, Khalai alalaanda  
kulupango lwesukulu ati: “We  
lupango ube uwakosa saana  
pakuti ulelesha ifipondo  
ififwaya ukwingila mukati ke  
sukuulu lyesu.”