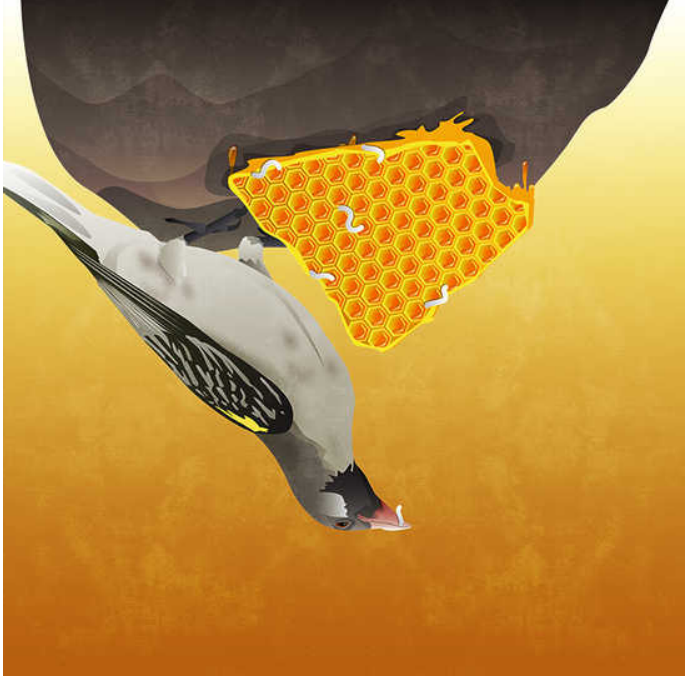


Icilandushi cakwa kalinda wa buch!



Zulu folktales
Wiehan de Jager
Sandra Mulesu
IciBemba



Global Storybooks

globalstorybooks.net

Icilandushi cakwa kalinda wa

buch!

Zulu folktales
Wiehan de Jager
Sandra Mulesu



This work is licensed under a Creative Commons
[Attribution 3.0 International License](https://creativecommons.org/licenses/by/3.0).
<https://creativecommons.org/licenses/by/3.0>





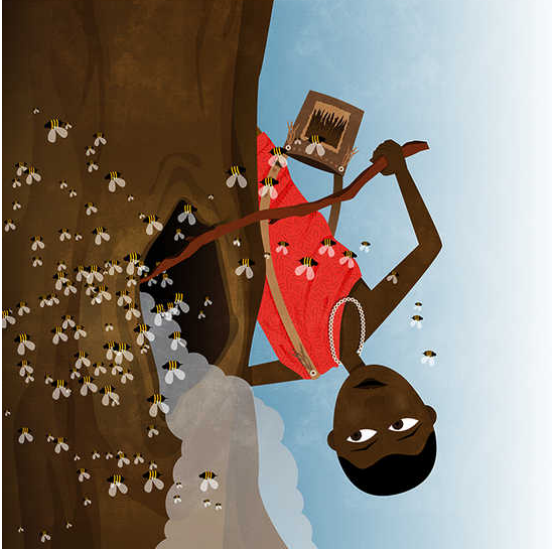
Akakalyashi kakwa Ngede, kalinda wa buchi na Gingile uwakaso. Bushiku bumo ninshi Gingile aile mukulunga aunfwile Ngede alemwita. Mukanwa kakwa Ngele mwaiswilila pakunfya ikyashi lya buchi. Efyo aiminine ukunfwikisha, ayamba ukunfwikisha, ukufwailisha mpaka amona iconi bucimuti pamulu wamutwe wakwe. “Chitik-chitik-chitik,” akacini kalila cilya kalepululuka ukuya kucimuti cimbi, nacimbi. “chitik-chitik-chitik” nokwiminina limolimo pakushininkisha ukuti Ginglie alekonka.



Panuma yakashita kanono, batika pacimuti
!cikulu. ngede ekeamba ukutantala
mumisambo. Elyo aisa ikala pamusambo
umo nokusontela Gingile kumutwe kwati
alemwala, " Panoi isa nombai Ninshi!
ulecita palyaponse?" Gingile tamwene
inshimu munshi yacimuti lelo alicetekele
Ngede.



Efyo abikile umufwi wakwe mwisamba lyacimuti, alonganika utukuni akosha nomulilo. Ututukuni twali utwacushi sana ngatule yaka. Eyo aninine kucimuti naikatilila kumpela yatumuti kumeno yakwe.



Panonofye aunftwa uko inshimu shile
pupuka. Shalefuma nokwingila mubwendo
bwa cimuti- mulupako lwanshimu. Cilya
Gingile afika palupako, asunkilisha
kumpeka yachusi mucipunda. Inshimu
epakufulumukamo, nashikalipa.
Shapupuka shaya pantu tashatemwa
ichushi- lelo shalisha shamusmaulako
Gingile.



Kanshi abana bakwa Gingile ngabaumfwa
ilyashi lyakwa Ngede bacinidi utoni
utunono. Lyonse ngabapanda ubuchi,
balatushiliapo ubuchi bummo ubwakwa
kalinda wabuchi.



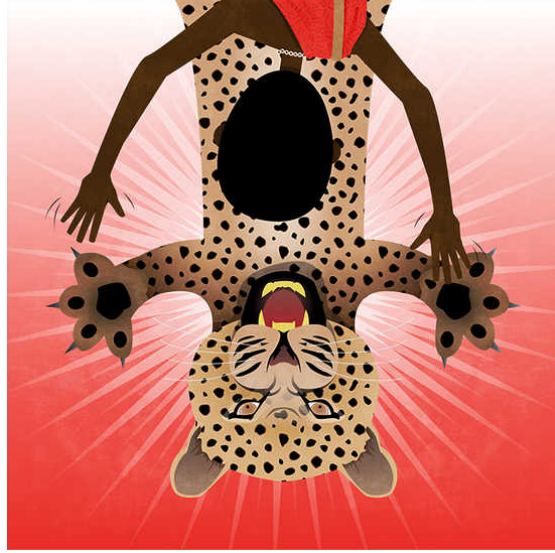
Cilya shaya, aingisha ukuboko micinsa.
Asendamo ubuchi buletona, ubusuma,
ubwamafuta. Epakubika bwino bwino
mukacola kakwe asndeke pakubeya
nokwamba ukwikila.



Cilya imbili tailati ipilibuke, Gingele
abutuka ukwikila kucimuti. Mukubutuka
apusa umusambo umo epakuisanga
panshi, aikontola nanokulu. Aesha
ukuikula bwangu bwangu, iceshuko
imbwili yali notulo, tayamupepeke. Ngede
kalinda wabuchi eflyo alandwile elyo na
Gingile abambililepo ukukana itemwa.



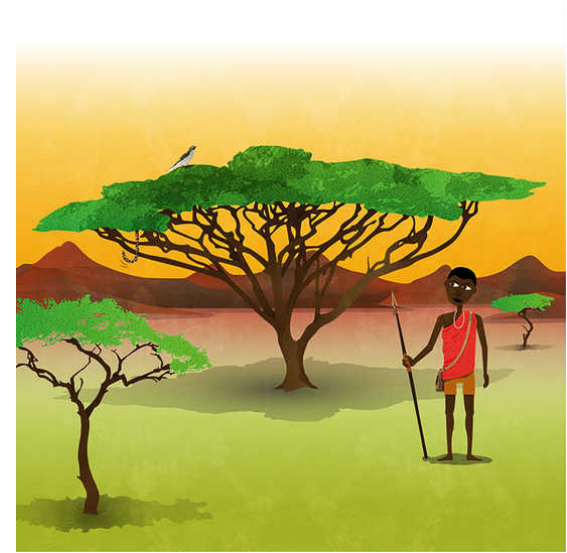
Ngede ninshi aletamba fyonse. Alelola fye ukumushila icipandwa cabuchi bwakwe pakumutasha- pakumulianga apali ubuchi. Ngede apitana kunisambo mpaka aya alefika panshi. Mpaka afika panshi, ayamba ukusobaula panshi mupipi nomulumendo pakulolela icabupe cakwe.



“Chinshi inshimu tashilefumina filya ciba Iyonse, limbi ulupako naluya sana apatali”. Aya kumusambo umbi, ukwisa isanga aleloleshanya nembwili mumenso. Imbwili tepakufiwa paipunfyanya utulo. Yatontomasha amenso, nokwisula akanwa nameno yatwa yamoneka.



Lelo Gingile ashimya nomulilo, asenda umufwi wakwe ayamba nokubwekela kumushi ukwabula nokuposa amano kuli Ngede. “Vic-torr! Vic-torr!” Gingile epakwiminina nokulolesha icuni, ayamba ukuciseka. “mune ulefwaya ubuchi? nine nacibomba incito yonse, nine inshimu shacisuma. Ninshi nalakupelelako ubuchi bwandi?” Efyo aile nokuya. Ngede tepakufulwa! Lelo alifilwa ukulandula.



Bushiku bumbi futi, Gingile aunfwa ubuchi buleita Ngede. Aibukisha ubuchi ubusuma nakabili akonkamo mucuni. Cilya bafika kumpela yampanga, Ngede aiminina pakuti atushako mwisaamba lyacimuti camyunga. “Ahh, ulupako lufwile lwaba mucimuti umu.” Bwangu bwangu ayasha umulilo ayamba na ukunina icimuti, icushi cilepita namumeno. Ngede ninshi naikala aletamba.