




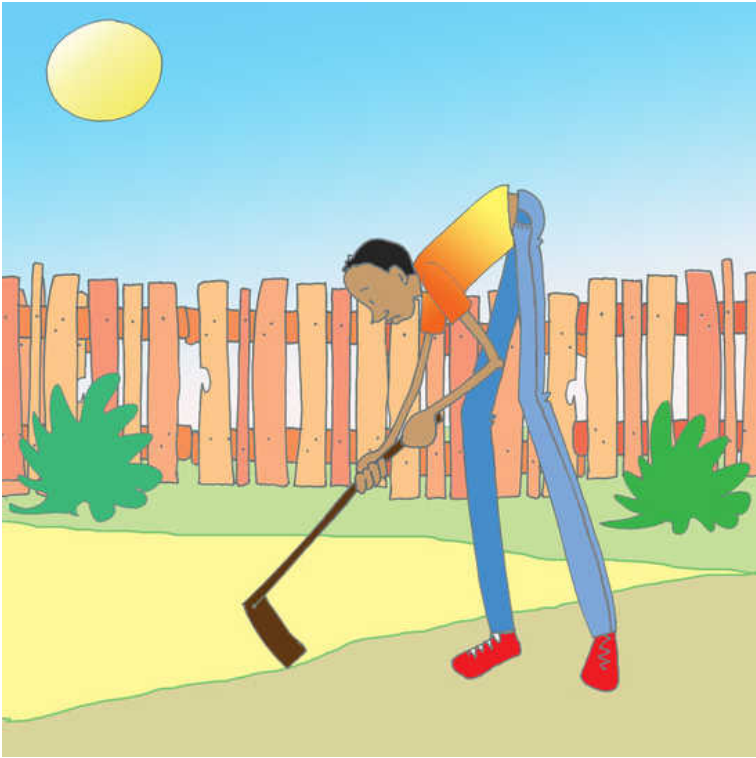




Indoda ende elingana nendlulamithi

A very tall man

-  Cornelius Gulere
-  Catherine Groenewald
-  Swarathe Violin
-  2
-  isiZulu [zu](#) / English [en](#)



Igeja lalilifishane.

...

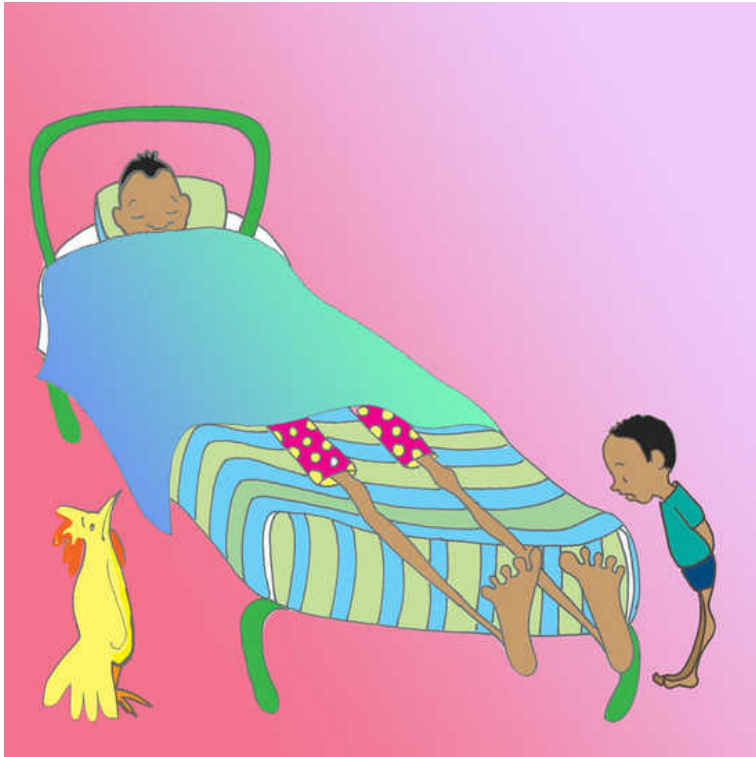
His hoe was too short.



Umnyango wakhe wawumncane ehluleka ukungena endlini.

...

His doorway was too low.



Umbhede wakhe wawumfishane.

...

His bed was too short.



Ibhayisikili nalo lilifshane.

...

His bicycle was too short.



Lendoda yayiyinde bo!

...

This man was too tall!



Wenza igeja elide.

...

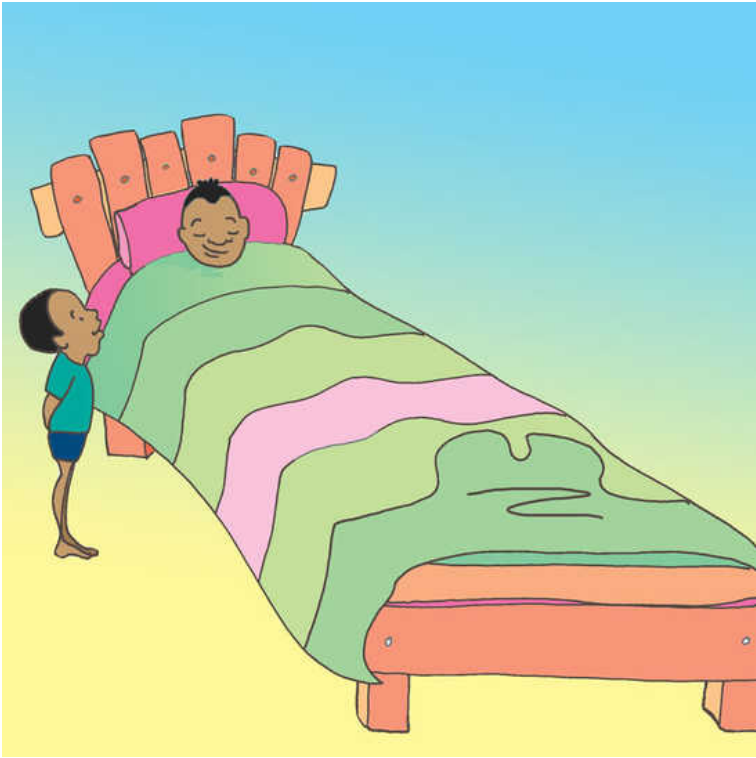
He made a very long hoe handle.



Wenza umnyango omude.

...

He made very high door frames.



Wenza umbhede omude.

...

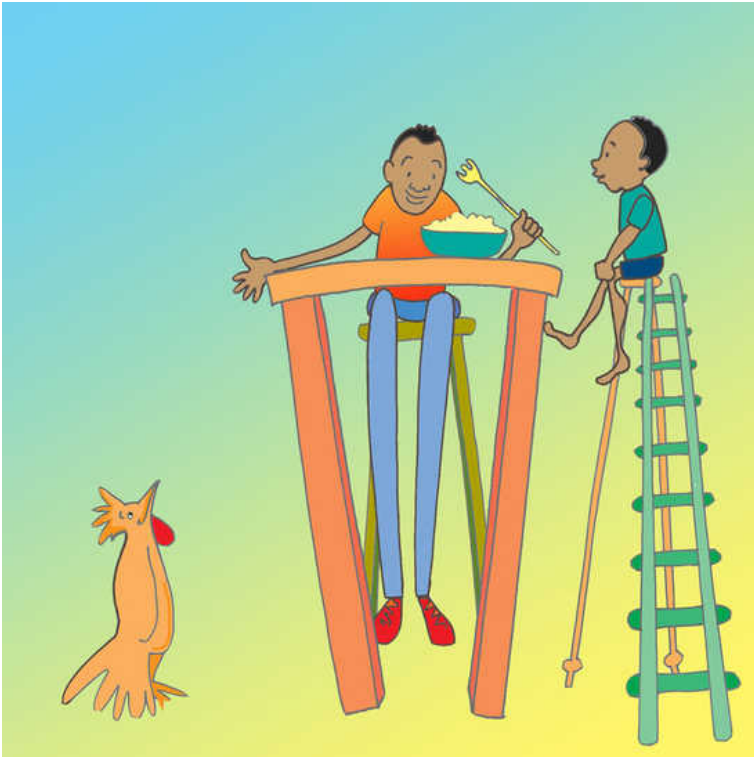
He made a very long bed.



Wathenga ibhayisikili elide.

...

He bought a very high bicycle.



Wahlala esihlalweni esiphezulu. Wadla ngemfologo ende.

...

He sat on a very high chair. He ate with a very long fork.



Washiya umuzi wakhe, wayohlala endle iminyaka.

...

He left his house and lived in a big forest. He lived for many years.



Global Storybooks

globalstorybooks.net

Indoda ende elingana nendlulamithi

A very tall man

 Cornelius Gulere

 Catherine Groenewald

 Swarathe Violin (zu)

