






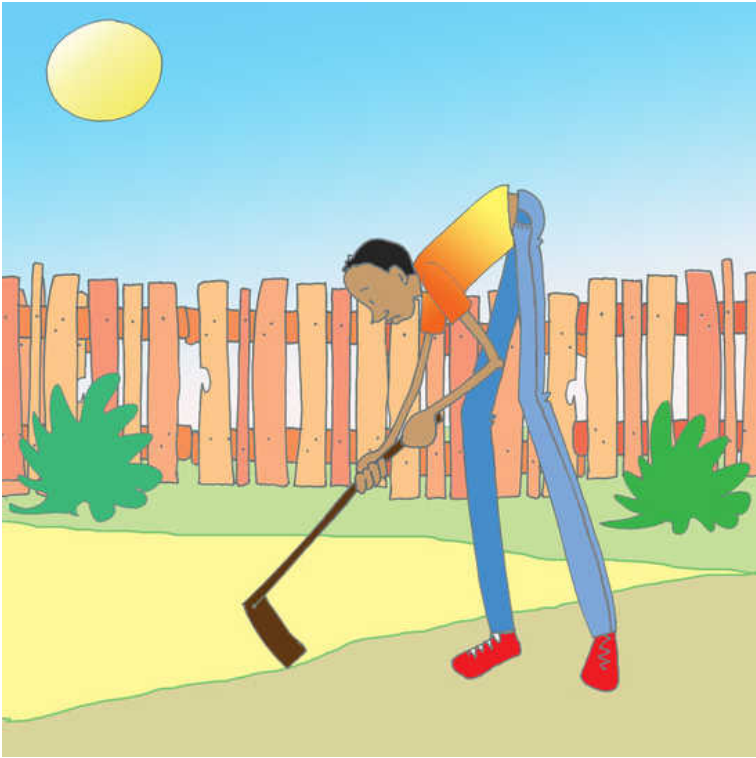
Omuhume muli

A very tall man

 Cornelius Gulere
 Catherine Groenewald
 Amos Mubunga Kambere

 2

 Olukonjo / English



Eyisuka yiwe ninguhi.

...

His hoe was too short.



Olhukyo Ihwiwe nilhukuhi.

...

His doorway was too low.



Engyingo yiwe ninguhi.

...

His bed was too short.



Egali yiwe ninguhi.

...

His bicycle was too short.



Omulhume ono nimuli kutsibu!

...

This man was too tall!



Mwakolha omuhini weisukayiwe mwamuli.

...

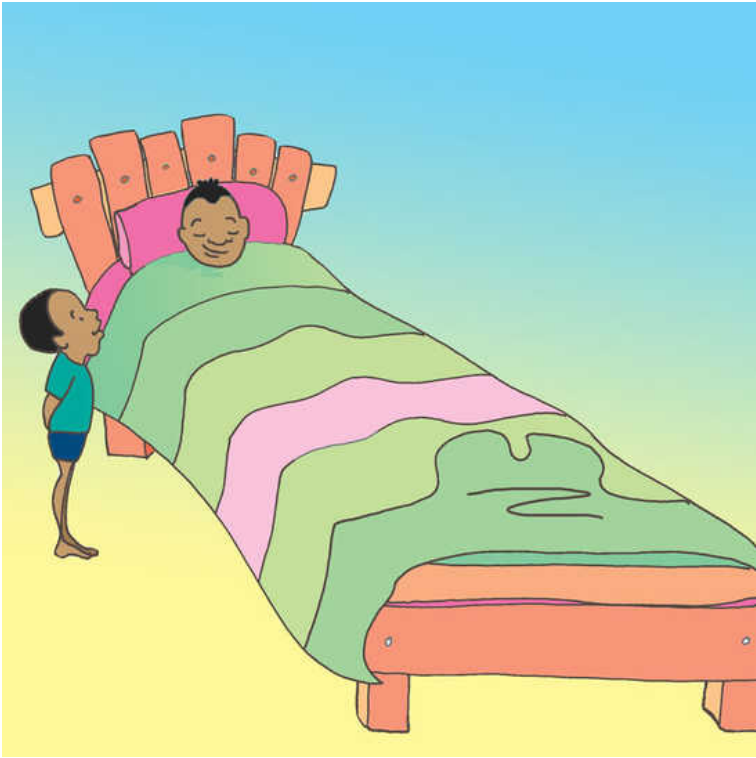
He made a very long hoe handle.



Mwakolha emyango yolhuyi mwamiri.

...

He made very high door frames.



Mwakolha engingo yiwe mwanyiri.

...

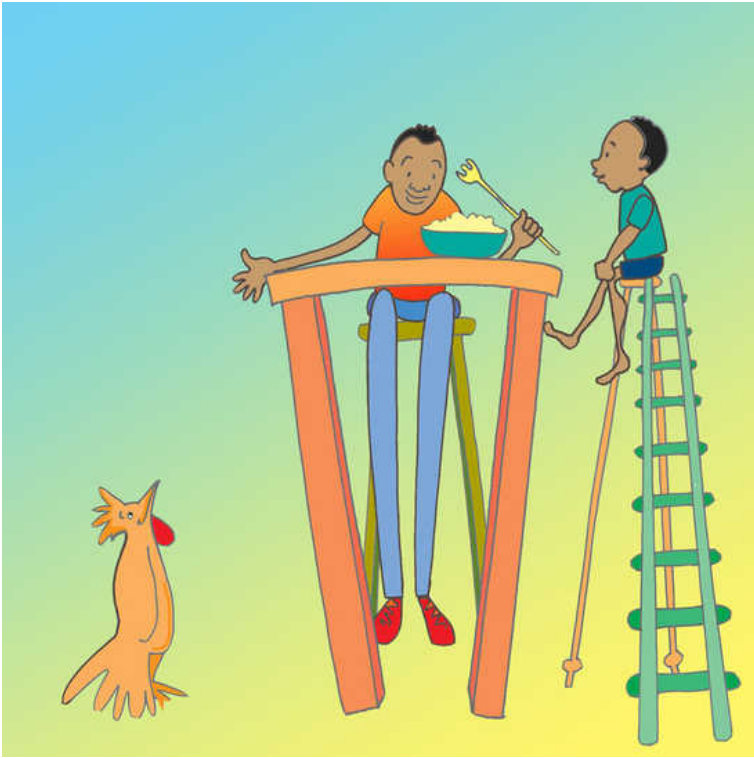
He made a very long bed.



Mwaghulha egali nyiri.

...

He bought a very high bicycle.



Mwikalha okwa kithumbi kiri. Akalya omwa ghuma nyiri.

...

He sat on a very high chair. He ate with a very long fork.



Mwalhwa omwa'nyumba yiwe neryo
amayikalha omwa musithu. Mwakotha myaka
minene.

...

He left his house and lived in a big forest. He
lived for many years.



Global Storybooks


globalstorybooks.net

Omulhume muli

A very tall man

 Cornelius Gulere

 Catherine Groenewald

 Amos Mubunga Kambere (koo)

