



Umwaume umutali sana

A very tall man

✎ Cornelius Gulere

👤 Catherine Groenewald

💬 Sandra Mulesu

📶 2

💬 IciBemba [bem](#) / English [en](#)



Ulukasu lwakwe lwali ulwipi.

...

His hoe was too short.



Umwishi wa pacibi cakwe wali uwipi.

...

His doorway was too low.



Ubusanshi bwakwe bwali ubwipi sana.

...

His bed was too short.



Inchinga yakwe yali iipi.

...

His bicycle was too short.



Uyu umwaume ali umutali sana.

...

This man was too tall!



Apangile ulukasu ulutali sana.

...

He made a very long hoe handle.



Apangile umwishi wacibi cakwe uutali.

...

He made very high door frames.



Apangile ubusanshi bwakwe ubutali.

...

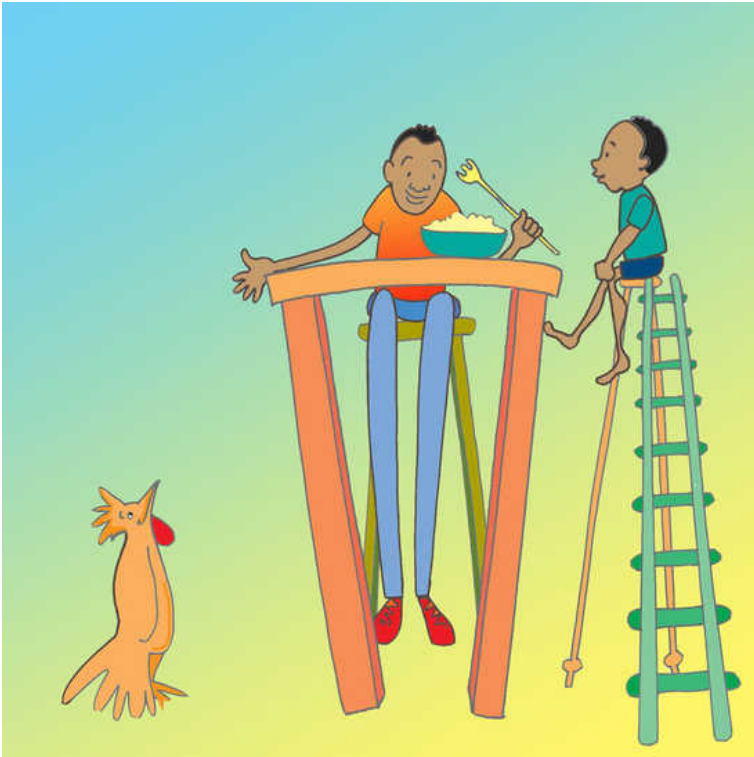
He made a very long bed.



Alishita inchinga iitali.

...

He bought a very high bicycle.



Aikele pacipuna icitali sana. Alelila kuli foloko iitali.

...

He sat on a very high chair. He ate with a very long fork.



Ashile ing'anda yakwe nokuya mukwikala mumpanga. Aikele imyaka iingi.

...

He left his house and lived in a big forest. He lived for many years.




Global Storybooks

globalstorybooks.net

Umwaume umutali sana

A very tall man

 Cornelius Gulere

 Catherine Groenewald

 Sandra Mulesu (bem)

