




Global Storybooks

globalstorybooks.net

Umwaume umtali sana / A very

tall man

 Cornelius Gulere

 Catherine Groenewald

 Sandra Mulesu (bem)



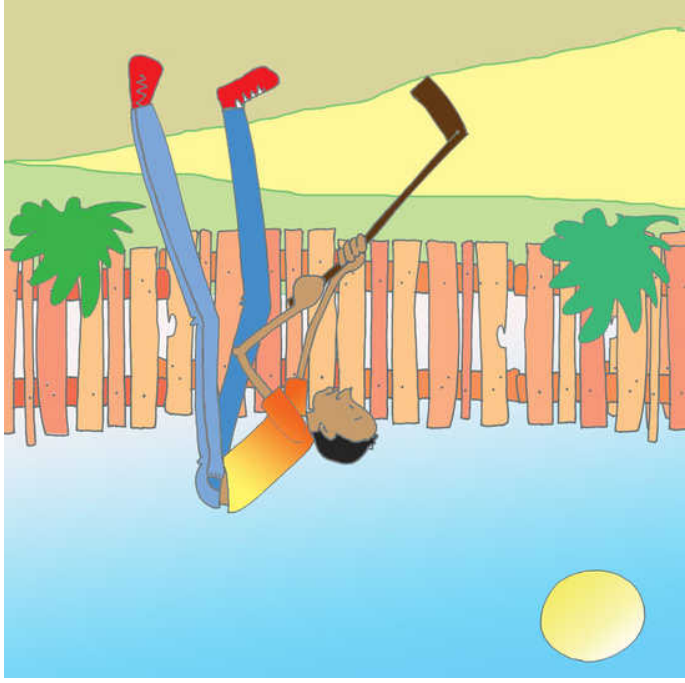
This work is licensed under a Creative Commons Attribution 3.0 International License.


<https://creativecommons.org/licenses/by/3.0>





Umwaume umtali sana

A very tall man



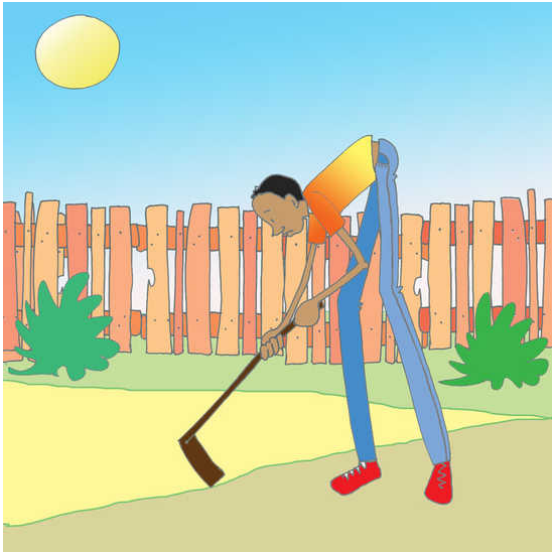
 Cornelius Gulere

 Catherine Groenewald

 Sandra Mulesu

|| 2

 IciBemba bem / English en



Ulukasu lwakwe lwali ulwipi.

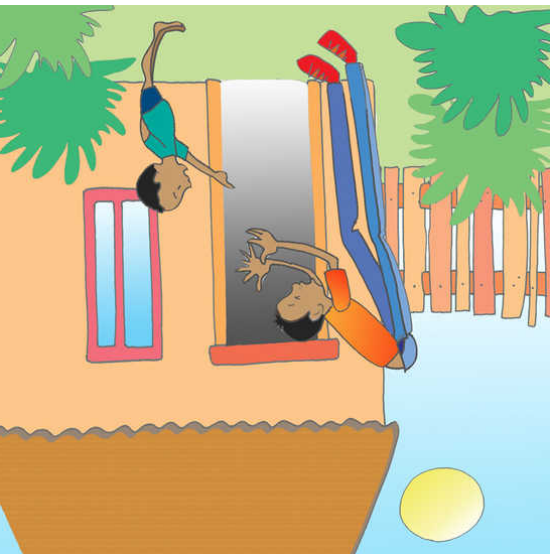
...

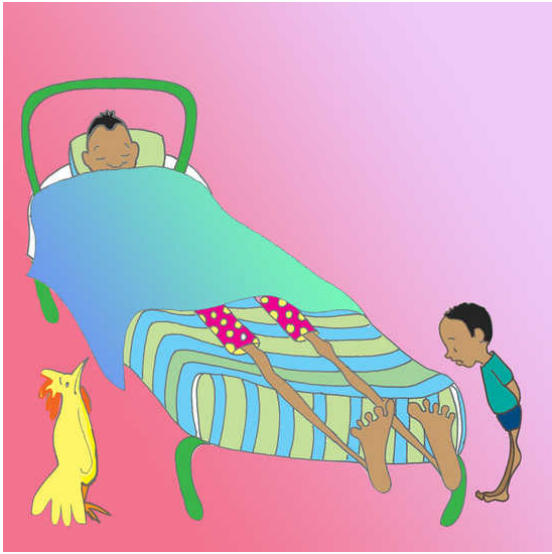
His hoe was too short.

His doorway was too low.

...

Umwishi wa pacibi cakwe wali uwipi.





Ubusanshi bwakwe bwali ubwipi sana.

...

His bed was too short.



Inchinga yakwe yali iipi.

...

His bicycle was too short.



Ashile ing'anda yakwe nokuya

mukwikala mumpanga. Aikele imyaka

iingi.

...

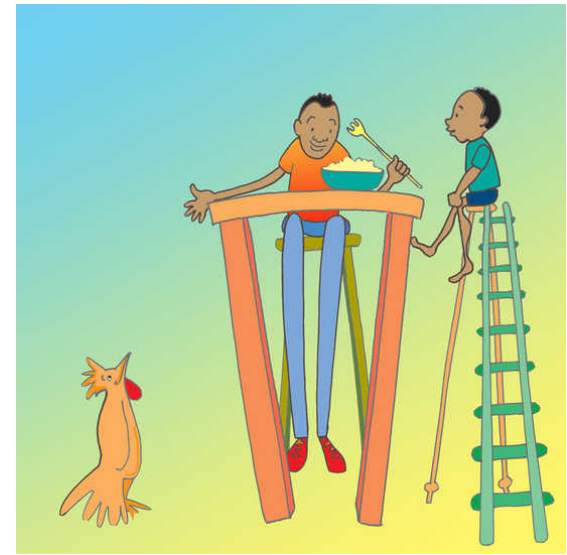
He left his house and lived in a big forest. He lived for many years.



Uyu umwaume ali umutali sana.

...

This man was too tall!



Aikele pacipuna icitali sana. Alelila kuli foloko iitali.

...

He sat on a very high chair. He ate with a very long fork.



Apangile ulukasu ulutali sana.

...

He made a very long hoe handle.



Alishita inchinga itali.

...

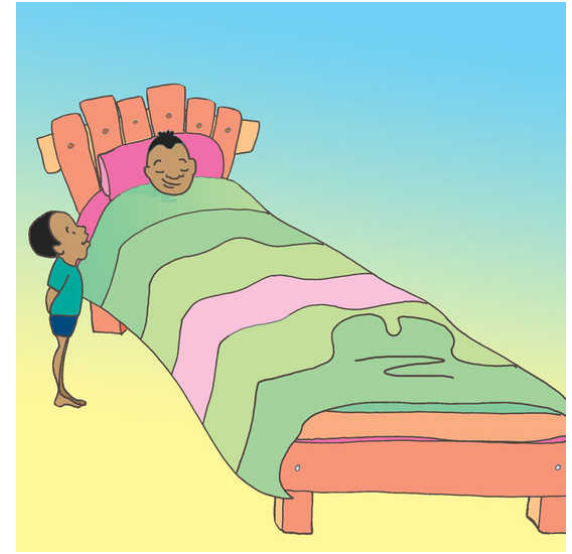
He bought a very high bicycle.



Apangile umwishi wacibi cakwe uutali.

...

He made very high door frames.



Apangile ubusanshi bwakwe ubutali.

...

He made a very long bed.